

independent living

BE INSPIRED

- CONNECT ● GROW
- CONTRIBUTE ● MOVE
- FEEL ● REFLECT

LOCATIONS

- AUDITORIUM — A
- BILLIARD ROOM — BR
- BRANDYWINE LOWER LEVEL — BLL
- BRANDYWINE PARKING LOT — BPL
- BROOKSIDE — B
- BROOKSIDE LOBBY AREA — BL
- BROOKSIDE PATIO — *Patio*
- CAFE — C
- CONFERENCE ROOM — CN
- CRAFT ROOM — CR
- DINING ROOM — DR
- FARM HOUSE — FH
- FITNESS CENTER — FC
- FRONT PARKING LOT — FPL
- LAWN — L
- LIBRARY — LB
- LOBBY — ML
- MAIN DINING ROOM — MDR

TRANSPORTATION SCHEDULE

- TUESDAY & THURSDAY
9:30 a.m.
Grocery Shopping
- TUESDAY
1 p.m.
Grocery Shopping

ADDITIONAL SERVICES

- FITNESS CENTER INSTRUCTION/
TRAINER
Tuesday, 1-3 p.m.
- BARGAIN BOX
Tuesday & Thursday 12-2 p.m.
Longwood, Lower Level



www.SeniorLifestyle.com
Activities are subject to change



- 9:15 ● Out to Church 3
- 10:45 ● Catholic Service | A
- 1:00 ● Many Moods of Christmas at Calvary Lutheran | ML
- 1:30 ● Crafter's Corner | B
- 3:00 ● Order Out Sundays! | ML
- 3:00 ● Movie Matinee: "Joyful Noise" | A
- 5:30 ● Bingo | ML

- 10:00 ● Library Committee | CR 4
- 10:00 ● Words to Live by | C
- 11:30 ● Rosary | FH
- 12:45 ● Going Strong Exercise | A
- 2:00 ● Ed Brugel and His Handbells | A
- 6:30 ● Cards and Table Games | C
- 7:00 ● Movie & Popcorn: "Chicago" | A

- 9:30 ● Grocery Shopping | ML 5
- 10:00 ● BRAC Meeting | CN
- 10:30 ● Pretty & Polished | B
- 1:00 ● Fitness Training (Until 3 p.m.) | FC
- 1:00 ● Bingo at Brookside | B
- 1:00 ● Afternoon Trip to Grocery Stores on Small Lift Bus | ML
- 2:00 ● Christmas Cork Crafts | A
- 6:30 ● Cards and Table Games | C
- 7:00 ● Trivia Tuesdays | FH

- 10:30 ● Shopping at Christmas Tree Shop & Lunch | ML 6
- 11:00 ● Tai Chi Fusion | A
- 1:30 ● Linked Senior Games | ML
- 2:30 ● Men's Billiard Club | BR
- 2:45 ● Holiday Singalong with Tom! | B

- 9:30 ● Grocery Shopping | ML 7
- 10:00 ● Move & Thrive | A
- 1:00 ● Handi-Crafts: Cards & Handwork | CR
- 2:00 ● Brain Health University | A
- 4:30 ● Men's Night Out | ML
- 6:30 ● Armchair Traveler: Pearl Harbor | A

- 10:00 ● Forever Fit .comSeniors | B 8
- 11:15 ● Actors Circle | A
- 2:30 ● Happy Hour | ML
- 6:00 ● Cub Scouts Pack 76 Carolers | MDR
- 7:00 ● Bingo | A

- 10:00 ● Silver Bells Chorus | A 2
- 10:00 ● Holiday Shuffle Walking Club | ML
- 11:00 ● Stretch and Relax | B
- 11:00 ● Penny Poker | CR
- 11:15 ● Discover Your Mark: Holiday Charades | B
- 1:00 ● Bingo | B
- 3:30 ● Linked Senior Yoga | B

- 9:15 ● Out to Church 10
- 10:45 ● Catholic Service | A
- 1:30 ● Crafter's Corner | B
- 2:00 ● Non Denominational Service | A
- 3:00 ● Order Out Sundays! | ML
- 3:00 ● Movie Matinee: "Polar Express" | A
- 5:30 ● Bingo | ML

- 10:00 ● Library Committee | CR 11
- 11:30 ● Rosary | FH
- 12:45 ● Going Strong Exercise | A
- 2:00 ● Brain Health University | A
- 2:30 ● Catholic Mass | A
- 6:30 ● Cards and Table Games | C
- 7:00 ● Movie & Popcorn: "La La Land" | A

- HANUKKAH STARTS AT SUNSET 12
- 9:30 ● Grocery Shopping | ML
- 10:30 ● Pretty & Polished | B
- 10:30 ● Ambassadors' Meeting | FH
- 12:00 ● BRAC/Ambassador Holiday Luncheon | MDR
- 1:00 ● Afternoon Trip to Grocery Stores on Small Lift Bus | ML
- 1:00 ● Bingo at Brookside | B
- 1:00 ● Fitness Training (Until 3 p.m.) | FC
- 2:00 ● Ho Ho Ho Holiday Crafts | A
- 6:30 ● Cards and Table Games | C
- 7:00 ● Trivia Tuesdays | FH

- 10:30 ● Brandywine River Museum | ML 13
- 11:00 ● Tai Chi Fusion | A
- 1:30 ● Linked Senior Games | ML
- 2:30 ● Men's Billiard Club | BR
- 7:00 ● Resident Holiday Party | ML

- 9:30 ● Grocery Shopping | ML 14
- 10:00 ● Move & Thrive | A
- 1:00 ● Handi-Crafts: Cards & Handwork | CR
- 2:00 ● Brain Health University | A
- 6:30 ● Our Neighborhood Lights Ride | ML

- 10:00 ● Forever Fit .comSeniors | B 15
- 10:00 ● Concordville HS Chamber Choir | ML
- 11:15 ● Actors Circle | A
- 2:30 ● Happy Hour | ML
- 7:00 ● Bingo | A

- 10:00 ● Silver Bells Chorus | A 16
- 10:00 ● Holiday Shuffle Walking Club | ML
- 11:00 ● Stretch and Relax | B
- 11:00 ● Penny Poker | CR
- 11:15 ● Cinnamon Ornaments | B
- 1:00 ● Bingo | B
- 2:15 ● Hanukkah Celebration | B
- 3:30 ● Linked Senior Yoga | B

- 9:15 ● Out to Church 17
- 10:45 ● Catholic Service | A
- 1:30 ● Crafter's Corner | B
- 2:00 ● Non Denominational Service | A
- 3:00 ● Order Out Sundays! | ML
- 3:00 ● Movie Matinee: "A Christmas Story" | A
- 5:30 ● Bingo | ML

- 10:00 ● Library Committee | CR 18
- 10:00 ● Words to Live by | C
- 11:00 ● Poetry Club: Read, Write & Share | CR
- 11:30 ● Rosary | FH
- 12:45 ● Going Strong Exercise | A
- 1:00 ● Exton Mall, Kohl's & Walmart Trip Holiday Shopping | ML
- 2:00 ● Brain Health University | A
- 6:30 ● Cards and Table Games | C
- 7:00 ● Movie & Popcorn: "Amadeus" | A

- 9:30 ● Grocery Shopping | ML 19
- 10:30 ● Pretty & Polished | B
- 1:00 ● Fitness Training (Until 3 p.m.) | FC
- 1:00 ● Bingo at Brookside | B
- 1:00 ● Afternoon Trip to Grocery Stores on Small Lift Bus | ML
- 2:00 ● Resident Forum | A
- 2:00 ● East HS Orchestra, Band & Choir Concert | ML
- 2:45 ● Activity Meeting | A
- 7:00 ● Carols by the Fireplace | ML

- 9:30 ● Trip to Delaware Park Casino | ML 20
- 11:00 ● Tai Chi Fusion | A
- 1:30 ● Linked Senior Games | ML
- 2:30 ● Men's Billiard Club | BR
- 3:30 ● Appetizers with Andrea | ML
- 7:00 ● Bible Baptist Character Choir | A

- WINTER BEGINS 21
- 9:30 ● Grocery Shopping | ML
- 10:00 ● Move & Thrive | A
- 1:00 ● Handi-Crafts: Cards & Handwork | CR
- 2:00 ● Food Committee Meeting | CN
- 2:00 ● Brain Health University | A
- 4:30 ● Men's Night Out | ML
- 4:30 ● Ladies' Night Out | ML
- 7:00 ● BRAC Floor Meetings

- 10:00 ● Forever Fit .comSeniors | B 22
- 11:15 ● Actors Circle | A
- 2:30 ● Happy Hour | ML
- 2:30 ● Rockin' Around the Christmas Tree Party | A
- 7:00 ● Bingo | A

- 10:00 ● Silver Bells Chorus | A 23
- 10:00 ● Holiday Shuffle Walking Club | ML
- 11:00 ● Stretch and Relax | B
- 11:00 ● Penny Poker | CR
- 11:15 ● 12 Days of Christmas | B
- 1:00 ● Bingo | B
- 2:15 ● Holiday Cookie Baking | B
- 3:30 ● Linked Senior Yoga | B
- 3:30 ● Herr's Holiday Lights: Ride & Dinner | ML

- CHRISTMAS EVE 24
- 9:15 ● Out to Church
- 10:45 ● Catholic Service | A
- 1:30 ● Crafter's Corner | B
- 2:00 ● Non Denominational Service | A
- 3:00 ● Order Out Sundays! | ML
- 3:00 ● Movie Matinee: "Christmas with the Kranks" | A
- 5:30 ● Bingo | ML

- CHRISTMAS 25
- 9:45 ● Holiday Social | ML
- 10:00 ● Library Committee | CR
- 11:00 ● Holiday Reminiscing | B
- 11:30 ● Rosary | FH
- 6:30 ● Cards and Table Games | C
- 7:00 ● Movie & Popcorn: "It's a Wonderful Life" | A

- 9:30 ● Grocery Shopping | ML 26
- 10:30 ● Pretty & Polished | B
- 1:00 ● Fitness Training (Until 3 p.m.) | FC
- 1:00 ● Bingo at Brookside | B
- 1:00 ● Afternoon Trip to Grocery Stores on Small Lift Bus | ML
- 2:00 ● Music Matters | A
- 3:00 ● Birthday Cocktail Party For December Plus 1 Guest | FH
- 6:30 ● Cards and Table Games | C
- 7:00 ● Trivia Tuesdays | FH

- 11:00 ● Tai Chi Fusion | A 27
- 1:30 ● Linked Senior Games | ML
- 2:30 ● Men's Billiard Club | BR
- 4:00 ● Birthday Dinner (Until 6 p.m.) | MDR
- 7:00 ● DVD & Desserts | ML
- 7:00 ● DVD: Mannheim Steamroller | A

- 9:30 ● Grocery Shopping | ML 28
- 10:00 ● Move & Thrive | A
- 1:00 ● Handi-Crafts: Cards & Handwork | CR
- 2:00 ● Brain Health University | A
- 7:00 ● Armchair Traveler | A

- 10:00 ● Forever Fit .comSeniors | B 29
- 11:15 ● Actors Circle | A
- 1:00 ● Learn Dominoes | CR
- 2:30 ● Happy Hour | ML
- 7:00 ● Bingo | A

- 10:00 ● Silver Bells Chorus | A 30
- 10:00 ● Holiday Shuffle Walking Club | ML
- 11:00 ● Stretch and Relax | B
- 11:00 ● Penny Poker | CR
- 1:00 ● Bingo | B
- 3:30 ● Linked Senior Yoga | B

- NEW YEAR'S EVE 31
- 9:15 ● Out to Church
- 10:45 ● Catholic Service | A
- 1:30 ● Crafter's Corner | B
- 3:00 ● Order Out Sundays! | ML
- 3:00 ● Andre Rieu in Wonderland | A
- 5:30 ● Bingo | ML
- 9:00 ● New Year's Eve Party | MDR



- ### BIRTHDAYS THIS MONTH
- | | |
|------------------------|-----------------------|
| LOIE TOAL — 1st | JEANNE KELCH — 19th |
| ADELE HEPBURN — 6th | NANCY ROGAL — 19th |
| BILLY WATTS — 6th | MARGE RICHESON — 22nd |
| MARY MCBRIDE — 7th | GEORGE DALY — 26th |
| PAT MCDONNELL — 9th | EDNA HESS — 30th |
| ROSANNE REDDITT — 12th | JOAN HALPIN — 31st |
| GLADIS HOCHINS — 14th | JEAN GRUBER — 31st |
| NANCY MCDEVITT — 17th | |

EVENT RECAP

our howling halloween bash!

Who says you are too old to enjoy Halloween? George Bernard Shaw said, "We don't stop playing because we grow old, we grow old because we stop playing."

Halloween is one of those holidays that never grows old. We enjoyed great entertainment and dancing, scary and cute costumes and festive, yet ghoulish, food and drinks. Start thinking about your costumes for next year, so we can outdo ourselves again! Let's play and have fun as long as we can!



THIS MONTH'S *heart hero*

HOSPITALITY, EXCELLENCE,
APPRECIATION,
RESPECT, TEAMWORK

SHAREEMA is a fairly new team member, but she exemplifies all of our core values of Hospitality, Excellence, Appreciation, Respect, and Teamwork. Shareema is a hard worker, leader, compassionate and caring, honest and trustworthy, has a heart of gold and will help anyone in need. She has the energy and ethics Bellingham looks for in their team members! Shareema, you have what we are looking for in a Bellingham family member!



MANAGEMENT TEAM

Andrea DiOttavio, *Executive Director*

Paige Jacobs, *Director of Resident Programs*

Tracy Rzucidlo, *Director of Resident Services*

Kelly Engelman, *Business Office Manager*

Liz Hall-Boyle, *Director of Sales & Marketing*

Mike Mulhollan, *Dining Services Director*

Jude Morrison, *Dining Room Manager*

Devon Paul, *Director of Plant Operations*

Tracey Jordan, *Director of Housekeeping*

Barbara Kenna, *Memory Care Director*

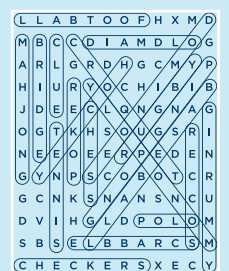
Kimberly Goodall, *Nursing Home Administrator*

Demetrius Wall, *Human Resource Director*

Lori Barajas, *Sales Counselor*

Christy Ogborn, *Move in Coordinator*

TRAIN
YOUR
BRAIN
solution



SENIOR LIFESTYLE
FAMILY-OWNED COMMUNITIES

