

The Asbury News

News and Information for the Residents of Asbury Heights

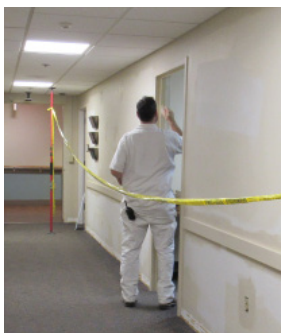
January 2019

Renovation Update

Several Changes Planned for 2019

Although the Family Hospice project at Asbury (six in-patient hospice rooms) is still being reviewed by Mt. Lebanon Municipality, we will soon begin demolition and abatement. The hospice area is being constructed in Building 6, Level 2 (formerly the Garden Apartments). Because dumpsters and a construction trailer will be needed, we must block off the lower half of the Building 6, Level 2 parking lot.

Construction of the Hospice community will change the traffic patterns throughout Buildings 5, 6 and 7. Independent residents in The Allemont (Building 7, Level 1) must use the Breezeway (connector between Buildings 7 and 5). Please be aware that Building 6, Level 2 will be secured. And the Laundry Room will also be secured with no entrance/exit other than Laundry Staff. Directional signs will be posted to assist you.



Top: Building 6, Level 2 is ready for major demolition. The area will be converted into a Hospice community.

Left: Painting continues throughout various hallways.

Asbury Accolades

Positive Stories From Residents and Families

The following excerpt comes from a letter written by the family of a former Spring Lane resident.

I have been taking care of my husband's aunt Sophie for nine years... I placed Sophie in Asbury at the same time my mother was a resident... Both unfortunately had dementia. My mother passed in 2010, [but] I continued to trust the care at Asbury for Sophie and visited her often.

There are so many employees and departments at Asbury that I want to thank, including the Finance Department who were always there for me when I had questions and made the billing so easy to understand. The beauty shop who made Sophie look her best; even taking the time and patience when she was in a wheel chair and did not understand what was happening.

I want to thank everyone for the help they provided to me. Always there for all my questions and concerns.

Asbury HEIGHTS

Part of UPMC Senior Communities

Happy New Year!

Celebrations Campus-wide

Another trip around the sun and a party for everyone! Asbury residents celebrated the New Year with parties campus wide.

On New Years Eve, Independent Living residents held a party in the Social Room. Entertainment was provided by Mr. Charles May, an Electric Violin player.

Refreshments were provided and many residents brought their beverage of choice. Eight lucky winners received a special gift!

Asbury Villas residents also had a New Year's Eve party. Entertainer Mikey Dee played the accordion. Josie served pizza bagels and non alcoholic champagne.



Residents celebrated the New Year while wearing hats and blowing horns during a mock countdown.



Recent Snowfall?

If you have plans to go off campus after a snowfall, you can contact the Maintenance Department at ext. 5000 to request the snow be removed from your vehicle and parking space.

If you have transportation scheduled with the Asbury van, please know that it could be cancelled subject to a large snowfall or predicted inclement weather. The Transportation Coordinator will contact you if transportation will be delayed or cancelled.

This is for your safety and the safety of our drivers.

Income Tax Assistance Get Help Filing

A volunteer tax professional from AARP Foundation Tax-Aide will be at Asbury on Wednesday, March 27 from 9:30 AM until 2:00 PM to assist residents with filing their income tax returns. This service is free of charge.

Below is a list of information residents will need to bring with them to their appointment.

- Last year's tax forms
- SSA-1099, Social Security statement
- All 1099s for pensions, interest, dividends, capital gains, etc.
- All tax statements received in January and February
- Total of any estimated payments made to IRS or to Pennsylvania Department of Revenue
- Checkbook if expecting to owe or want direct deposit or debit from checking account

- If itemizing deductions, a letter from Asbury Heights defining how much of the fees are deductible
- All medical receipts or a summary total of medical expenses from Asbury Heights

Please sign up for a 45-minute appointment by calling Teresa Valentino at 412-571-5190.

Enhancing Services With Preferred Care at Home

Asbury is working with Preferred Care to arrange a certified caregiver to be on site daily from 7:00 AM until 11:00 PM. Residents can pay privately for services provided.

The caregiver would be available to work short shifts for residents in the mornings and evenings, even as few as 15-minute increments. Services will include (but not limited) dressing, making the bed, changing bed linens, watering plants, caring for pets and assistance to medical appointments.

This program will be available to Independent and Personal Care residents this February. Attend the Independent Living Resident Council Meeting on Monday, January 21 at 1:30 PM in the Hickman Chapel to learn more.

Bake Sale

The next Bake Sale will be hosted by Mt. Lebanon United Methodist Church.

Friday, March 8

10:30 AM

Mall

Proceeds support Asbury's benevolent care fund.

Donor Appreciation

We are THANKFUL for the many Residents and their families, along with our Board of Directors, Staff and Community who provided financial contributions totaling over \$1 million dollars in 2018. Through this kindness, support has been provided for our Benevolent Care, Spiritual Life and Community Outreach programs.

As we celebrate the achievements of this success, we know that we have many projects and programs in need of support this year. During 2019, we will share with you funding priorities, donor recognitions and ways you can support Asbury this year.

We Remember

Asbury Foundation would like to take a moment to remember a few longtime friends and supporters that we have lost. Each one of these individuals knew the importance of giving back to their community and joined Asbury's 1908 Society. They have left a lasting legacy, impacting our mission. Through their generosity, we were able to exceed our 2018 fundraising goal.

Emma Jean Freil

Regis Gaughan

Laverne Lanich

Martha & Donald Lauffer

Harry C. Luebbe, Jr.

MARTIN LUTHER KING JR. DAY

Martin Luther King Jr. Day is a holiday and many staff members will be off that day. The Post Office will also be closed on this national holiday.



Resident Council Meetings

Asbury Villas Community Meeting
Tuesday, January 29 at 2:00 PM

Independent Residents
Monday, January 21 at 1:30 PM
Hickman Chapel

Nursing & Rehabilitation Center
Monday, January 28 at 2:00 PM
Evergreen Solarium

Spring Lane & Laurel Lane
Wednesday, February 6 at 3:45 PM
5th Floor Dining Room

Asbury Place
Monday, February 11 at 10:00 AM

The Embassy of Asbury Heights
Monday, January 21 at 4:00 PM
Regency Room

Upcoming Marketing Events

Asbury invites potential residents to special events on campus to familiarize them with our services and living accommodations. We understand that parking is limited during the days these events occur. Below is a list of dates when events are taking place. Please share these with your loved ones or whoever may plan on visiting.

January 22 in the afternoon

February 5 in the afternoon

February 19 in the afternoon

March 5 in the afternoon

March 19 in the afternoon

We will share additional dates in future issues of this newsletter.

Amazon Smile
donates to
AsburyFoundation
when you shop.



Contact Courtney Kartman at
412-571-5106 to find out how you can
get started at no cost to you.

Asbury HEIGHTS

Part of UPMC Senior Communities

EDITOR:

Audrey Burgoon, Senior Director,
Business Development and Resident Relations

WRITER/DESIGNER:

Jon Ebel, Lead Communications Specialist

PROOF READERS:

Ann Delo, resident
John and Bonnie King, residents

asburyheights.org



www.facebook.com/AsburyHeights



www.twitter.com/@AsburyHeights

