

The
AMBASSADOR

SAINT LUKE'S BISHOP SPENCER PLACE

January 2019

 **Saint Luke's**
BISHOP SPENCER PLACE

ACTIVITY KEY



Celebration



Movie



Theatre



Arts



Music



Nature



Excursion



Speaker



Cocktails



Dining



Coffee & Conversation



Class



Health



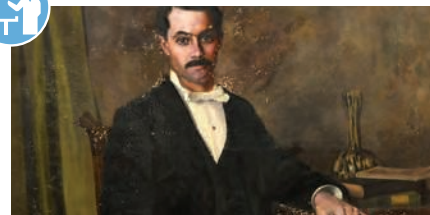
Spirituality & All That Jazz

Wednesday, January 2
BSP bus departs at 6:30 p.m.

Join us at Unity Temple on the Plaza for *Spirituality & All That Jazz*, a monthly showcase of the incredible wealth of local Kansas City Jazz talent. This month, enjoy the playful piano of Bram Wijnands, performing stride, vintage jazz, and boogie woogie with Tim Whitmer and The Consort Band.

Bram Wijnands was born in Eindhoven, the Netherlands, and graduated from the Hilversum Conservatory in the Netherlands, the largest school of jazz in Europe. He previously taught at the UMKC Conservatory of Music and currently teaches at Kansas City Kansas Community College. In 2005, Bram, alongside Bobby Watson, was featured at *Jazz At Lincoln Center* as part of a Wynton Marsalis program featuring jazz styles of different American cities.

Sign up with the concierge.



Speaker Series | Rebecca Manning

Thursday, January 3
3:00 p.m. | Westport Room

We're pleased to welcome Rebecca Manning, collections manager at Mulvane Art Museum at Washburn University in Topeka and an art instructor at the university. Rebecca will present "Endangered Art in the Mulvane Art Museum's Permanent Collection: A Project for Conservation." Last spring, the museum exhibited, "Endangered Art," a collection of about 30 paintings by American artists that are in need of repair. Restoration and conservation of paintings, especially when major damage is a factor, is not a simple task. A great deal of thought is put into the details of each piece, all the way down to the frame. Rebecca was co-curator of the exhibition.

New Year's Day

Tuesday, January 1

The BSP office, Salon, and Bistro will be closed.



This is a monthly magazine for residents of Saint Luke's Bishop Spencer Place.

Bishop Spencer Place ♦ 4301 Madison Ave., Kansas City, MO 64111
816-931-4277 ♦ BishopSpencerPlace.org



Movie Classic with Robert Butler | *Broadcast News*

Friday, January 4 | 2:00 p.m.
Westport Room

1987's *Broadcast News*, written and directed by James L. Brooks, stars Albert Brooks and William Hurt as reporters attracted to producer Holly Hunter in a fast-paced TV news room. The film was nominated for Academy Awards for Best Picture, Best Actor, Best Actress, Best Supporting Actor, and Best Original Screenplay.



The Noteables Wednesday, January 9 2:00 p.m. Madison Living Room

The Junior League of Kansas City's renowned singing group—The Noteables—is back for a lively post-holiday performance. The group has been performing for more than 35 years, and two of the original members are still part of the group!

This group is special to BSP, as one of our residents used to serve as their piano accompanist.



Speaker Series | Bill Buckner: Portugal Trip Thursday, January 10 3:00 p.m. | Westport Room

BSP resident Bill Buckner will regale us with tales and photos of his recent trip to Portugal. His presentation will include many treasures: private, public, religious, monumental, historic, and academic. Please join us!



Cucharada Tango Trio Friday, January 11 | 3:00 p.m. Madison Living Room

With Sean Mawhirter on guitar, Tina Bilberry on violin, and Guy Montes on flute, Cucharada brings lively tango music to the Midwest. Their aim is to pursue the canon synonymous with Argentina, being true to the aesthetic while carving out their own interpretations. Of the trio, the *Kansas City Star* says, "Cucharada adds another unique sound to the Kansas City music scene."

NOTE | Dr. Weidman will be available in the Westport Library on Saturdays from **11:00 a.m. to noon.**



Metropolitan Opera at the Plaza Cinemark | Adriana Lecouvreur Saturday, January 12 BSP bus departs at 11:15 a.m.

Enjoy the Met's *Live in HD* movie-theater transmission of *Adriana Lecouvreur*, an opera in four acts by Francesco Cilea, written to a libretto by Arturo Colautti, based on the life of the French actress Adrienne Lecouvreur (1692-1730).

Sign up with the concierge.



Lunch & Learn | NEW SERIES: Brain Myths Exploded Monday, January 14 Lunch | 11:30 a.m.-12:00 noon Program | starts at 12:00 noon Westport Room

We continue the Great Courses DVD series *Brain Myths Exploded: Lessons from Neuroscience*. Lunch begins promptly at 11:30. Two talks begin at noon and run until 1:00. Lunch will be provided (10 points).

Sign up with the concierge by Saturday, January 12, to allow PB&J time to prepare lunch.



Speaker Series | Jean Paul Bradshaw II

**Tuesday, January 15 | 3:00 p.m.
Westport Room**

Jean Paul Bradshaw II is a partner at Lathrop Gage, specializing in white-collar criminal defense, complex civil litigation, class actions, and internal corporate investigations, particularly in the agribusiness and healthcare industries.

Jean Paul is the former U.S. Attorney for the Western District of Missouri, was a member of the Economic Crimes Council at the U.S. Department of Justice and the Missouri Governor's Commission on Crime, and formed the first federal healthcare fraud task force in Missouri.

Jean Paul will speak at BSP about political campaigns and dark money. In an August 29, 2018, editorial for the *Kansas City Star* titled "Lift the Veil on Dark Money's Corrosive Effects," he wrote, "But many financial supporters of political campaigns for candidates and policy issues don't want to have their names shared... It is no wonder that so many citizens are cynical about the political process. As they become cynical, they are less likely to involve themselves in that process. And a less involved citizenry is not good for our nation's future."



Nelson-Atkins Napoleon Docent Tour

Wednesday, January 16 | BPS bus departs at 2:30 p.m.

BSP residents have a chance to take part in a docent-led tour of "Napoleon: Power and Splendor" at the Nelson-Atkins Museum of Art.

The exhibition marks the first exploration of the majesty and the artistic, political, and ideological significance of Napoleon's imperial court from Napoleon's self-appointment as First Consul in 1799 to his abdication in 1814. A selection of more than 200 works, most of which have never before been exhibited in North America before this tour, reveal the power and splendor

of the Imperial Household and its role in fashioning a monarchic identity for the new emperor, his family, and loyal entourage. The exhibition is organized and circulated by the Montreal Museum of Fine Arts (MMFA) with the participation of the Nelson-Atkins, the Musée national du château de Fontainebleau, and the Virginia Museum of Fine Arts.

The tour is limited to 10 people. Tickets are \$18 each or free if you are a museum member. Please call Helen to reserve a spot and let her know if you are a member.



Art Reception | Jane Pronko

Thursday, January 17 | 4:00 p.m. | Art Gallery

Join us for a reception for artist Jane Pronko, whose paintings will be on display in the BSP Art Gallery. Jane Pronko was born in Illinois and has lived in the Kansas City area since graduating from KU. Her work is represented in a number of public, corporate, and private collections in the US and

Europe. She is best known for her urban landscapes of Kansas City and New York.

Jane has taught painting at Avila University and the University of Missouri—Kansas City. She maintains an avid interest in art history, both historical and contemporary.

| SUNDAY | MONDAY | TUESDAY | WEDNESDAY | THURSDAY | FRIDAY | SATURDAY | |
|--|--|---|---|--|---|--|--|
|  | | New Year's Day 1 OFFICES SALON BISTRO CLOSED NO SCHEDULED ACTIVITIES | 2 10:00 Stretch <i>AC</i> 10:30 Grocery Store Trip <i>*</i> 1:00 Tai Chi <i>AC</i> 6:30 <i>Bus Departs for Spirituality & All That Jazz *</i> | 3 10:00 Strength & Balance <i>AC</i> 1:30 Arthritis Exercise <i>AC</i> 2:00 Life Enrichment Committee <i>P</i> 2-4 CC Bank <i>MLR</i> 2:30 Dining Committee <i>A</i> 3:00 <i>Speaker Series Rebecca Manning WR</i> | 4 10:00 Stretch <i>AC</i> 2:00 <i>Movie Classic with Robert Butler Broadcast News WR</i> | 5 9:30 Grocery Store Trip <i>*</i> 11-12 Librarian Hours <i>WR</i> 11:00 Rosary <i>CH</i> 7:00 Movie <i>JLR</i> | |
| | 6 10:00 Holy Eucharist <i>CH</i> 11-1 Brunch <i>CDR</i> 3:00 Movie <i>JLR</i> | 7 9:30 Tai Chi <i>AC</i> 10:30 Stretch <i>AC</i> 12:00 <i>Lunch & Bridge Mixer CDR *</i> 1:00 Art Class <i>AC</i> 1:30 Dollar Tree Trip <i>*</i> 4:30 Men's Club <i>A</i> | 8 9:30 <i>Catholic Mass CH</i> 10:00 Strength & Balance <i>AC</i> 11:00 Resident Connections Comm <i>A</i> 11:00 Bible Study <i>WR</i> 1-2 Blood Pressure Check 109 1:30 Arthritis Exercise <i>AC</i> 2:30 Alterations <i>A</i> 3:30 Resident Council <i>A</i> | 9 10:00 Stretch <i>AC</i> 10:30 Grocery Store Trip <i>*</i> 1:00 Tai Chi <i>AC</i> 2:00 <i>The Noteables MLR</i> | 10 10:00 Strength & Balance <i>AC</i> 1:30 Arthritis Exercise <i>AC</i> 2-4 CC Bank <i>MLR</i> 3:00 <i>Speaker Series Bill Buckner: Portugal Trip WR</i> | 11 10:00 Stretch <i>AC</i> 1:30 Chair Volleyball <i>WR</i> 3:00 <i>Cucharada Tango Trio MLR</i> | 12 9:30 Grocery Store Trip <i>*</i> 11-12 Librarian Hours <i>WR</i> 11:00 Rosary <i>CH</i> 11:15 <i>Bus Departs to Plaza Theater for Opera in HD Adriana Lecouvreur *</i> 7:00 Movie <i>JLR</i> |
| | 13 10:00 Holy Eucharist <i>CH</i> 11-1 Brunch <i>CDR</i> 3:00 Movie <i>JLR</i> | 14 9:30 Tai Chi <i>AC</i> 10:30 Stretch <i>AC</i> 11:30 <i>Lunch & Learn Brain Myths Exploded WR *</i> 4:30 Ladies' Club <i>P</i> | 15 10:00 Strength & Balance <i>AC</i> 11:00 Bible Study <i>WR</i> 1-2 Blood Pressure Check 109 1:30 Arthritis Exercise <i>AC</i> 3:00 <i>Speaker Series Jean Paul Bradshaw WR</i> | 16 10:00 Stretch <i>AC</i> 10:30 Grocery Store Trip <i>*</i> 11:00 Café Hope <i>CH</i> 1:00 Tai Chi <i>AC</i> 2:30 <i>Bus Departs for Nelson-Atkins Napoleon Docent Tour *</i> | 17 10:00 Strength & Balance <i>AC</i> 1:30 Arthritis Exercise <i>AC</i> 2-4 CC Bank <i>MLR</i> 4:00 <i>Artist Reception Jane Pronko ART</i> | 18 10:00 Stretch <i>AC</i> 3:00 <i>The Bow Wind Trio MLR</i> | 19 9:30 Grocery Store Trip <i>*</i> 11-12 Librarian Hours <i>WR</i> 11:00 Rosary <i>CH</i> 7:00 Movie <i>JLR</i> |
| | 20 10:00 Holy Eucharist <i>CH</i> 11-1 Brunch <i>CDR</i> 3:00 Movie <i>JLR</i> | 21 Martin Luther King Day 9:30 Tai Chi <i>AC</i> 10:30 Stretch <i>AC</i> 1:30 Walmart Trip <i>*</i> 3:00 <i>Art Blocks Futurism and Dada: Effects of WWI Donna Houtteman WR</i> | 22 9:30 <i>Catholic Mass CH</i> 10:00 Strength & Balance <i>AC</i> 11:00 Bible Study <i>WR</i> 1-2 Blood Pressure Check 109 1:30 Arthritis Exercise <i>AC</i> 3:00 <i>Speaker Series Cynthia Carlson WR</i> | 23 10:00 Stretch <i>AC</i> 10:30 Grocery Store Trip <i>*</i> 1:00 Tai Chi <i>AC</i> | 24 10:00 Strength & Balance <i>AC</i> 1:30 Arthritis Exercise <i>AC</i> 2-4 CC Bank <i>MLR</i> 3:00 <i>Speaker Series Stephanie Knappe WR</i> | 25 10:00 Stretch <i>AC</i> 1:30 Chair Volleyball <i>WR</i> 4:30 <i>Cocktail Hour with Michael Pagan MLR</i> | 26 9:30 Grocery Store Trip <i>*</i> 11-12 Librarian Hours <i>WR</i> 11:00 Rosary <i>CH</i> 7:00 Movie <i>JLR</i> |
| | 27 10:00 Holy Eucharist <i>CH</i> 11-1 Brunch <i>CDR</i> 3:00 Movie <i>JLR</i> | 28 9:30 Tai Chi <i>AC</i> 10:30 Stretch <i>AC</i> 10:30 Women's Coffee <i>B</i> 3:00 Good Book Reading Group <i>CH</i> | 29 10:00 Strength & Balance <i>AC</i> 11:00 Bible Study <i>WR</i> 1-2 Blood Pressure Check 109 1:30 Arthritis Exercise <i>AC</i> 3:00 <i>Speaker Series Biagio Mazza, Jr. WR</i> | 30 10:00 Stretch <i>AC</i> 10:30 Grocery Store Trip <i>*</i> 1:00 Tai Chi <i>AC</i> 3:00 <i>The Great Courses Impressionism WR</i> | 31 10:00 Strength & Balance <i>AC</i> 1:30 Arthritis Exercise <i>AC</i> 2-4 CC Bank <i>MLR</i> 2:45 <i>Bus Departs for Plaza Library Pick up at 4:00 *</i> 3:00 <i>Mark Lowrey & Molly Hammer Duo MLR</i> | | |
| | | | | <div><div><div>A Abbey</div><div>AC Activity Center (above Bistro)</div><div>ART Art Gallery</div><div>B Bistro</div></div><div><div>CDR Canterbury Dining Room</div><div>CH Chapel</div><div>JLR Jefferson Living Room</div><div>MLR Madison Living Room</div></div><div><div>P Pub</div><div>WR Westport Room</div><div>109 Apt. 109 Madison</div><div><i>*</i> Sign up at reception desk</div></div></div> | | | |

JANUARY 2019

| SUNDAY | MONDAY | TUESDAY | WEDNESDAY | THURSDAY | FRIDAY | SATURDAY |
|---|--|--|---|---|--|---|
| A Abbey CD Coventry Dining Room CDR Canterbury Dining Room CH Chapel CL Coventry Living Room | MLR Madison Living Room RR Room to Room TR Therapy Room YD York Dining Room YG York Garden YL York Lounge | New Year's Day 1 OFFICES SALON BISTRO CLOSED NO SCHEDULED ACTIVITIES | 2 11:00 Stretch & Strengthen CD 1:00 PFL Jan & Badger RR 1:30 Prayer Group CD 3:00 Pianist Lenn Anderson YL | 3 11:00 Walking Club 1:00 PFL Erin & Jay RR 3:30 Bingo CD | 4 11:00 Stretch & Strengthen CD 2:00 Baking Club TR | 5 11:00 Exercise CD 11:00 Rosary CH 1:30 PFL Al & Chuck RR 2:00 Saturday Movie CD |
| 6 10:00 Holy Eucharist CH 2:15 Sunday Movie CD 3:00 Bingo YL | 7 11:00 Stretch & Strengthen CD 2:00 Movie Matinee CD 4:30 Men's Club P | 8 9:30 Catholic Mass CH 11:00 Walking Club 1:30 Manicures RR 2:30 Alterations A 3:30 Bingo CD 6:15 Game Night YL | 9 11:00 Stretch & Strengthen CD 1:00 PFL Jan & Badger RR 1:30 Prayer Group CD 2:00 The Noteables MLR | 10 11:00 Walking Club 2:00 Pie of the Month RR 3:30 Bingo CD | 11 10:30 Resident Council TR 11:00 Stretch & Strengthen CD 1:30 Chair Volleyball WR 3:00 Cucharada Tango Trio MLR | 12 11:00 Exercise CD 11:00 Rosary CH 1:30 PFL Al & Chuck RR 2:00 Saturday Movie CD |
| 13 10:00 Holy Eucharist CH 2:15 Sunday Movie CD 3:00 Bingo YL | 14 11:00 Stretch & Strengthen CD 3:00 Pianist Donna Maddox YL 4:30 Ladies' Club P | 15 10:00 Coffee & Donuts RR 11:00 Walking Club 1:30 Manicures RR 3:30 Bingo CD 6:15 Game Night YL | 16 11:00 Stretch & Strengthen CD 1:00 PFL Jan & Badger RR 1:30 Prayer Group CD 3:00 Pianist Lenn Anderson YL | 17 11:00 Walking Club 1:00 PFL Erin & Jay RR 3:30 Bingo CD | 18 11:00 Stretch & Strengthen CD 3:00 The Bow Wind Trio MLR | 19 11:00 Exercise CD 11:00 Rosary CH 1:30 PFL Al & Chuck RR 2:00 Saturday Movie CD |
| 20 10:00 Holy Eucharist CH 2:15 Sunday Movie CD 3:00 Bingo YL | 21 Martin Luther King Day 11:00 Stretch & Strengthen CD 3:00 Name That Tune CD | 22 9:30 Catholic Mass CH 11:00 Walking Club 1:30 Manicures RR 3:30 Bingo CD 6:15 Game Night YL | 23 11:00 Stretch & Strengthen CD 1:00 PFL Jan & Badger RR 1:30 Prayer Group CD 1:45 Myron Frye Fitness 4 Ever YL | 24 11:00 Walking Club 1:30 Make Your Own Walker Bag CD 3:30 Bingo CD | 25 11:00 Stretch & Strengthen CD 1:30 Chair Volleyball WR 4:30 Cocktail Hour with Michael Pagan MLR | 26 11:00 Exercise CD 11:00 Rosary CH 1:30 PFL Al & Chuck RR 2:00 Saturday Movie CD |
| 27 10:00 Holy Eucharist CH 2:15 Sunday Movie CD 3:00 Bingo YL | 28 11:00 Stretch & Strengthen CD 3:00 Pianist Donna Maddox YL | 29 11:00 Walking Club 1:30 Manicures RR 3:30 Bingo CD 6:15 Game Night YL | 30 11:00 Stretch & Strengthen CD 1:00 PFL Jan & Badger RR 1:30 Prayer Group CD | 31 11:00 Walking Club 3:00 Mark Lowrey & Molly Hammer Duo MLR 6:30 Bingo Night YL | * PFL = Pets For Life | |

JANUARY 2019

| SUNDAY | MONDAY | TUESDAY | WEDNESDAY | THURSDAY | FRIDAY | SATURDAY |
|--|--|---|---|--|---|--|
| A Abbey CD Coventry Dining Room CDR Canterbury Dining Room CH Chapel CL Coventry Living Room | MLR Madison Living Room RR Room to Room TR Therapy Room YD York Dining Room YG York Garden YL York Lounge | New Year's Day 1 OFFICES SALON BISTRO CLOSED NO SCHEDULED ACTIVITIES | 2 10:00 Music Moves YL 10:30 Current News YL 1:00 PFL Jan & Badger RR 3:00 Pianist Lenn Anderson YL | 3 10:00 Music Moves YL 10:30 Current News YL 2:30 Name Ten YL 6:30 Bingo Night YL | 4 10:00 Music Moves YL 10:30 Resident Council A 2:30 New Year Tea Party YL | 5 10:15 Music Moves YL 11:00 Rosary CH 1:30 PFL Al & Chuck RR 2:30 Saturday Afternoon Adventure YL |
| 6 10:00 Holy Eucharist CH 2:00 PFL Charlie the Pom RR 3:00 Bingo YD | 7 10:00 Music Moves YL 10:30 Current News YL 1:30 Manicures RR 3:00 Name that Tune YL | 8 9:30 Catholic Mass CH 10:00 Music Moves YL 10:30 Current News YL 1:30 Devotions YD 3:00 Bingo YD 6:15 Game Night YL | 9 10:00 Music Moves YL 10:30 Current News YL 1:00 PFL Jan & Badger RR 2:00 The Noteables MLR | 10 10:00 Music Moves YL 10:30 Current News YL 2:00 Pie of the Month Share a Quote YL 6:30 Bingo Night YL | 11 10:00 Music Moves YL 10:30 Current News YL 1:30 Card/Board Games YL 3:00 Cucharada Tango Trio MLR | 12 10:15 Music Moves YL 11:00 Rosary CH 1:30 PFL Al & Chuck RR 2:30 Saturday Afternoon Adventure YL |
| 13 10:00 Holy Eucharist CH 1:30 Praise & Worship YD 3:00 Bingo YD | 14 10:00 Music Moves YL 10:30 Current News YL 1:30 Manicures RR 3:00 Pianist Donna Maddox YL | 15 10:00 Music Moves YL 10:30 Current News YL 1:30 Devotions YL 3:00 Bingo YD 6:15 Game Night YL | 16 10:00 Music Moves YL 10:30 Current News YL 1:00 PFL Jan & Badger RR 3:00 Pianist Lenn Anderson YL | 17 10:00 Music Moves YL 10:30 Current News YL 1:30 Himalayan Eugene RR 3:00 Word Games YL 6:30 Bingo Night YL | 18 10:00 Music Moves YL 10:30 Current News YL 1:30 Card/Board Games YL 3:00 The Bow Wind Trio MLR | 19 10:15 Music Moves YL 11:00 Rosary CH 1:30 PFL Al & Chuck RR 2:30 Saturday Afternoon Adventure YL |
| 20 10:00 Holy Eucharist CH 1:30 Praise & Worship YD 2:00 PFL Charlie the Pom RR | 21 10:00 Music Moves YL 10:30 Current News YL 1:30 Manicures RR 2:30 Martin Luther King, Jr., Day movie YL | 22 9:30 Catholic Mass CH 10:00 Music Moves YL 10:30 Current News YL 1:30 Devotions YD 3:00 Bingo YD 6:15 Game Night YL | 23 10:00 Music Moves YL 10:30 Current News YL 1:00 PFL Jan & Badger RR 1:45 Myron Frye Fitness 4 Ever YL | 24 10:00 Music Moves YL 10:30 Current News YL 2:30 Indoor Garden Club YL 6:30 Bingo Night YL | 25 10:00 Music Moves YL 10:30 Current News YD 2:30 Happy Hour YL | 26 10:15 Music Moves YL 11:00 Rosary CH 1:30 PFL Al & Chuck RR 2:30 Saturday Afternoon Adventure YL |
| 27 10:00 Holy Eucharist CH 1:30 Praise & Worship YD 2:00 PFL Charlie the Pom RR 3:00 Bingo YD | 28 10:00 Music Moves YL 10:30 Current News YL 1:30 Manicures RR 3:00 Pianist Donna Maddox YL | 29 10:00 Music Moves YL 10:30 Current News YL 1:30 Devotions YL 3:00 Bingo YD 6:15 Game Night YL | 30 10:00 Music Moves YL 10:30 Current News YL 1:00 PFL Jan & Badger RR 3:00 Word Games YL | 31 10:00 Music Moves YL 10:30 Current News YL 3:00 Mark Lowrey & Molly Hammer Duo MLR 6:30 Bingo Night YL | * PFL = Pets For Life | |



The Bow Wind Trio

**Friday, January 18 | 3:00 p.m.
Madison Living Room**

The Bow Wind Trio is back with another program of lively flute and string melodies! The ensemble is led by arranger/composer/woodwind performer Greg Briggs. Greg has played with many national acts including Barry Manilow, Johnny Mathis, Rod Stewart, and Ben Folds.

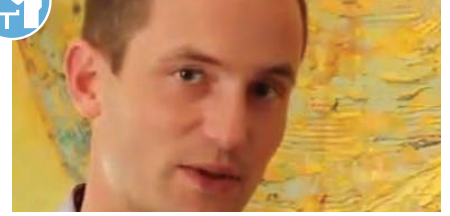
The Bow Wind Trio presents an eclectic blend of light classical works. Join us for an enchanting performance.



Speaker Series | Cynthia Jaramillo Carlson

**Tuesday, January 22
3:00 p.m. | Westport Room**

Cynthia Jaramillo Carlson is an executive associate with the KCMO Health Department and special projects coordinator for the Violence Free KC Committee, a team charged with developing a Youth and Family Violence Prevention Plan, with the goal of reducing incidents of violence affecting children, youth, and families through a public health approach.



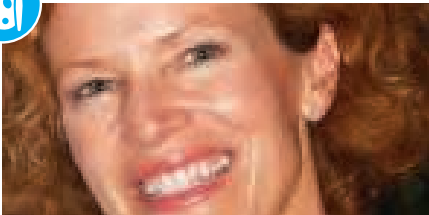
Speaker Series | Biagio Mazza, Jr.

**Tuesday, January 29
3:00 p.m. | Westport Room**

Biagio Mazza, Jr., is an expert in lower back pain, joint pain, fall prevention, and injury prevention. He is the founder of Elite Sports Medicine and Physical Therapy in Kansas City, one of the largest single-facility private practices in the country.

Biagio graduated as valedictorian of his class at Rockhurst University in 1999 and completed a Master of Physical Therapy in 2001. He is certified by the American Board of Physical Therapy Specialties as an Orthopedic Clinical Specialist and a Sports Clinical Specialist. There are fewer than 50 therapists nationwide who hold both of these distinctions. He also has worked as an adjunct instructor at Rockhurst, is an active member of the Kansas and Missouri Physical Therapy Associations, and has served as a physical therapy consultant for the Kansas City Royals.

Biagio will discuss fall and injury prevention.



ART BLOCKS | Donna Houtteman

**Monday, January 21 | 3:00 p.m.
Westport Room**

Donna Houtteman is the leading voice behind the Kansas City Art Institute's Art Sofa Series, a class for anyone who would like to gain a basic understanding of key artists, movements, and ideas. This month Donna will discuss "Futurism and Dada: Effects of WWI."



Speaker Series | Stephanie Knappe

**Thursday, January 24
3:00 p.m. | Westport Room**

Stephanie Knappe is the Samuel Sosland Curator of American Art at the Nelson-Atkins. The American collection includes works by Thomas Hart Benton, George Caleb Bingham, Georgia O'Keeffe, and John Singer Sargent. Stephanie recently curated *Frida Kahlo, Diego Rivera and Masterpieces of Modern Mexico from the Jacques and Natasha Gelman Collection*.

Chaplain's CORNER

Laughter is always a good way to begin a new year, so as we head into 2019 I would like to share with you something that a resident shared with me way back in 2018.

Dentist's hymn: *Crown Him with Many Crowns*

Weatherman's hymn: *There Shall be Showers of Blessings*

Contractor's hymn: *The Church's One Foundation*

Tailor's hymn: *Holy, Holy, Holy*

Golfer's hymn: *There's a Green Hill Far Away*

Optometrist's hymn: *Open My Eyes That I May See*

Electrician's hymn: *Send the Light*

Shopper's hymn: *Sweet Bye and Bye*

Realtor's hymn: *I've Got a Mansion Just Over the Hilltop*

And for those who speed on the highway:

55 mph: *God Will Take Care of You*

75 mph: *Nearer My God to Thee*

85 mph: *This World is Not My Home*

95 mph: *Lord, I'm Coming Home*

100 mph: *Precious Memories*

Time has moved us on from 2018 to 2019. As the new year unfolds, bear in mind that, just as there is a time for every season under heaven, there is a hymn for (almost) every occasion on earth—and One to whom we can always turn no matter what.

—Chaplain Kathy Hall

Roman Catholic Mass

Father Bob | Tuesday, January 8 | 9:30 a.m. | Chapel

Father Bob | Tuesday, January 22 | 9:30 a.m. | Chapel

The History of Christianity: From the Disciples to the Dawn of the Reformation

We will resume our regular study of this Great Courses DVD series beginning **Tuesday, January 8, at 11:00 a.m.** in the **Westport Room**.

Pray the Rosary

Saturdays | 11:00 a.m. | Chapel



The Great Courses | Impressionism

Wednesday, January 30

3:00 p.m. | Westport Room

Join us for the Great Courses series, *From Monet to Van Gogh: A History of Impressionism*. Professor Richard Brettell gives insight into the artists who rebelled against the formality of the French Academy and created the most famous artistic movement in history.



Mark Lowrey & Molly Hammer Duo

Thursday, January 31

3:00 p.m.

Madison Living Room

Join us for an afternoon of jazz with singer Molly Hammer and pianist Mark Lowrey. A staple in the Kansas City jazz music scene, the *Pitch's* best solo jazz artist Mark Lowrey has made a name for himself with his versatility, command of the piano, and sound that transcends genres. Molly Hammer, named the *Pitch's* best jazz singer, has studied and recorded with Joe Cartwright.

HAPPY



BIRTHDAY

Gloria Stull, January 3

Phoebe Bunting, January 10

Bob Solenberg, January 13

Ken Kampfe, January 22

Zelma Dockery, January 25

Evelyn Smith, January 26

Marie Fellers, January 30

Dave Zoller, January 30

IN LOVING MEMORY



Charles Lindstrom

Jean Clayton

Kaleen Tiber

GOOD BOOKS

Monday, January 28 | 3:00 p.m. | Chapel

This month we will discuss *The Storied Life of A.J. Fikry*, Gabrielle Zevin, available in print, electronic, and audiobook formats. Please join us!

WITH APPRECIATION

A special thank you to all residents, family members, board members, and others who donated to our Employee Holiday Fund—with much gratitude and appreciation for your support throughout the year!

HAPPY 2019!

Garden TIME

Where, oh where are Bishop Spencer Place residents' holiday flower bulbs? After you have enjoyed them, the Garden Committee will care for them and see that they are replanted this fall. Just call a committee

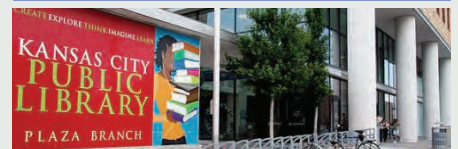


member for free pick-up! They will continue to add even more beauty in our Memorial Garden which gained unusual approbation last year.

Garden Committee meetings will resume next month. Interested in attending? Just tell Midori, our chairperson.

—Bobbie Ellis

PLAZA LIBRARY



Thursday, January 31

BSP bus departs 2:45 p.m., returns for pickup at 4:00 p.m.

Sign up with the concierge.



Cocktail Hour

WITH MICHAEL PAGAN

Friday, January 25, 4:30 p.m.

Madison Living Room | Canterbury Dining Room

Michael will perform while wine is served, 4:30–6:00 p.m.

Listen while you sit in the Pub, dine in the Canterbury Dining Room, or enjoy wine and cocktails in the Madison Living Room. Daily special and full dinner menu is available, also with complimentary drinks.



The Scene

**RECENT EVENTS
& PHOTOS**

