



■ Pages 6 and 7
Scenes Around
Our Community

In This Issue

■ Page 11 - Meet Our
Winning Employees
of the 2nd & 3rd Quarters

Celebrating
10 Years
in 2019

WoodlandLife

Vol. 11 No. 1

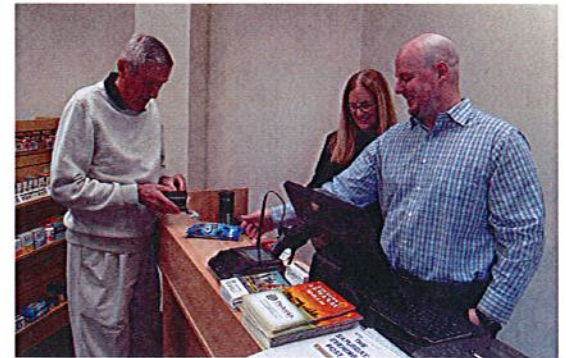
January 2019

Dedrick's at the Pond has Arrived!

On Monday, December 15th, Woodland Pond celebrated the long-awaited "soft opening" of Dedrick's at the Pond ("Dedrick's"), the Woodland Pond satellite location of Dedrick's Pharmacy, located in New Paltz. Dedrick's currently has a variety of personal care items and gifts available and will serve as a pharmacy pick up location beginning in January. Residents have been asking some questions about what we can expect from Dedrick's. Here are some of the most frequently asked items:

Q: Will Dedrick's be carrying food, like the Market Basket did?

A: Not to a great extent, at least not initially. Jared Nekos, the owner of Dedrick's, has reviewed the sales and inventory reports from the Market Basket and is aware of what types of items have been big sellers in the Market Basket. But, Dedrick's is not the Market Basket. Dedrick's is styled after a hometown drug store, with a focus on personal care and comfort items. Dedrick's has asked residents to request items they'd like to see in our store, by speaking to the shop clerk. Some limited snack, beverage, and ice cream novelties are expected to be sold in the near term, but there is currently no long-term plan as to what additional food items may be offered. A number of grocery delivery services now exist in the New Paltz area, and residents are encouraged to speak to the Concierge for additional information about these services.



Phil Kissinger had the honor of being the first customer for Dedrick's at the Pond. Assisting him with his purchase were Dedrick's owner Jared Nekos and store supervisor Susan Stammer. (Susan is also WP resident John Fracasse's daughter.)

Q: Will Dedrick's pay Woodland Pond fair market rent? **A:** No. Just as the Market Basket was never charged rent, nor the Bank; these vendor partners are welcomed to Woodland Pond as a convenience to residents, staff, and guests. The bank and Dedrick's take on all risk of staffing and inventory. Woodland Pond has no investment obligation to ensure that the bank nor Dedrick's are staffed as promised. As a 501(c)3, Woodland Pond is required to ensure that no more than 5% of the total square footage of our property is used for non-mission related purposes. The spaces used by the bank, hair salons, Dedrick's, Dr. DiNapoli for private practice, and the dentist all are included under this cap.

Q: Will Dedrick's have a pharmacist on site at Woodland Pond? **A:** Legally, Dedrick's at the Pond cannot provide pharmacy services. There are substantial legal and financial requirements for such arrangements and this is considered too high a risk for the owners. Residents will be able to have prescriptions sent in to the main Dedrick's location by their physicians, and once filled, those prescriptions can be picked up by the clerk in Dedrick's at the Pond. That said, there are likely opportunities for information and education sessions for our residents by the Dedrick's pharmacy staff. We will plan to schedule these in the first few months of 2019.

More to come on this exciting opportunity!

Evening Program
Time Change
Begins This Month

Please take note!
Starting this month all
evening programs will
begin at **7:00 p.m.**



This includes special programs
and concerts, evening interest
groups, and movies.

January Mystery Movie Night Series

Join award-winning actresses Helen Hayes and Mildred Natwick as they star as the eccentric elderly *Snoop Sisters* who solve mysteries with witty imagination and utter determination. The 90-minute episodes, part of a rotating NBC Mystery Movie series from the 1970's, will be shown each **Thursday evening** this month at **7 p.m.** in the PAC. *Note: Unfortunately, this TV series is not close-captioned.*



? mysteries with witty imagination and utter determination. The 90-minute episodes, part of a rotating NBC Mystery Movie series from the 1970's, will be shown each **Thursday evening** this month at **7 p.m.** in the PAC.

Special Piano Concert
in Memory of Steffi Lauer
Wednesday, Jan. 9 at 7:00 p.m.
in the Performing Arts Center

Come and enjoy a piano concert in loving memory of former Woodland Pond resident Steffi Lauer. Her daughter, Ruth Lauer-Manenti, is pleased to host this event, featuring Russian pianist Katya Grineva.

Born in Moscow, Ms. Grineva began playing piano at the age of five. She studied with Professor Pavel Messner at the Moscow Conservatory, where she began to give recitals and explore the interaction between artist and audience.



Ms. Grineva performs throughout the United States (entering her 17th season at Carnegie Hall), Europe, South America, and Asia.

Celebrating 100 years!

In celebration of Woodland Pond resident Bill Swetow's 100th birthday this month, residents are cordially invited to the following special events:



On **Wednesday, Jan. 23 from 4-5 p.m.** Bill and Vivian will host a happy hour for all residents to enjoy in the Pub/Game Room. And Bill's birthday cake will be the featured dessert for that evening's dinner!

On **Saturday, Jan. 26 at 3:00 p.m.** in the Performing Arts Center, enjoy a performance featuring renowned pianist Vladimir Feltsman, whose vast repertoire encompasses music from Baroque to 21st-century composers. He has appeared with all the major American orchestras and on the most prestigious musical stages and festivals worldwide. He is the founder and Artistic Director of the International Festival-Institute *PianoSummer* at SUNY New Paltz.

This performance is strictly for WP residents only. Seating in the Performing Arts Center will be limited to 100. Once the performance begins, seating will be closed in the PAC. A simulcast will take place in the Classroom with seating for 35. You must sign up for a seat, for either location, at the Concierge desk.



We've Done it!



The Woodland Pond Benefit Fund invites all residents to a celebration! In one year we have successfully raised more than \$25,000 for our Fund with the Community Foundations.

Join the new Fund Committee for a celebration in the Game Room on **Wednesday, Jan. 9 at 3:30 p.m.** Light refreshments will be provided.

Learn more about our plans for the New Year!

"Write it on your heart that every day is the best day of the year."

[Ralph Waldo Emerson]



Bus Trips for January
Sign Up at the Concierge Desk

Wednesday, Jan. 2 – Mohonk Preserve visit, weather permitting. Depart at 2 p.m.

Sunday, Jan. 6 at 3 p.m. – Newburgh Chamber Music presents the Ceres Quartet, performing works by Mozart, Bartok, and Beethoven. At St. George’s Episcopal Church in Newburgh. Depart at 1:45 p.m. [\$25]

Saturday, Jan. 12 at 1 p.m. – Met Live presents *Adriana LeCouvreur* at the Bardavon. Depart at 12 p.m. [\$27]

Sunday, Jan. 13 at 4 p.m. – Howland Chamber Music Piano Festival in Beacon presents Natasha Paremski, program to include Prokofiev’s *Vision Fugitives, Op. 22; Gaspard de la nuit* by Ravel, and Mussorgsky’s *Pictures at an Exhibition*. Depart at 2:30 p.m. [\$30]

Friday, Jan. 18 – Lunch Adventure to the Vigneto Café in Highland. Depart at 11:30 a.m. *Note: This is a 1-bus trip.*

Saturday, Jan. 19 at 7:30 p.m. – The Woodstock Symphony Orchestra presents a program including “Woodstock and Beyond Concerto Competition” winner and Sibelius’ *Symphony No. 2*. General seating – first come/first served. At the Woodstock Playhouse. Depart at 6 p.m.[\$23]

Sunday, Jan. 20 at 3 p.m. – Rhinebeck Performing Arts Center presents *DeliKatessen*, an intimate family portrait of loss and revenge set in a small shop on Manhattan’s west side. The owners of a deli have survived the Holocaust and are now faced with a new threat posed by a neighboring business owned by people who may, or may not, be whom they seem. Depart at 1:45 p.m. [\$24]

Continued next column

January Trips, continued.

Sunday afternoon, Jan. 27 – A visit to the Dia Art Museum in Beacon. (Free admission for Hudson Valley residents on the last Sunday of each month) Be sure to bring proof of residence with you.) Depart at 12:45 p.m.

Winter Weather and Bus Transportation

As we are in the season of potential inclement winter weather please remember that resident and driver safety must be considered. The Transportation Coordinator will determine if it is necessary to cancel transportation services. During periods of bad weather residents may be asked to reschedule medical appointments. Routine trips such as grocery shopping will be rescheduled when possible.



If it is necessary to cancel a trip for which residents have purchased tickets, it remains the resident’s responsibility to cover the cost.

Be sure to routinely check the Cart Room bulletin board for additional posted information about cultural events in the area and use the carpooling book in the Mail Room, if you’d like to join neighbors in riding together.



Giving Tree Project Warms Hearts

Thank you to everyone who contributed to the Giving Tree project. Both Family of New Paltz and Ulster County Community Action are grateful for your thoughtfulness and generosity. It is wonderful to see the holiday spirit in action at Woodland Pond!



Classic Movie Night

The Old Man and the Sea

Starring
 Spencer Tracey
 (1958)

Friday, Jan. 4 at 7:00 p.m.
 Performing Arts Center

Oscar Film Night

The Great Gatsby

Starring
 Toby Maguire, Leonardo DiCaprio
 and Carey Mulligan

Friday, Jan. 11 at 7:00 p.m.
 Performing Arts Center

WP Night at the Opera

Puccini’s

Manon Lescaut

with Renata Scotto, Placido Domingo and the Metropolitan Opera Orchestra and Chorus

Friday, Jan. 18 at 7:00 p.m.
 Performing Arts Center



Interfaith Committee



GRATITUDE - Thanks to all who made last year memorable. As we begin a new year we invite you to start with Gratitude.

GRATITUDE - Let's begin with where we are, who we are with, what we can do, and reflect on what we did to make our own life and others' lives better.

GRATITUDE - Yes, we left a year with disappointments, sadness and pain but also times of joy and gratitude. Now let's look to the opportunities we have in 2019.

Let's Think of *Gratitude*, Show *Gratitude* and be Strengthened by *Gratitude*. It will enable us to have a Happy New Year!

The Interfaith Committee invites you to look for announcements of future one-hour Tree of Faith programs. It also is grateful for your suggestions of future programs. The Interfaith Committee meets the **fourth Monday** of each month at 11:00 a.m. in the Classroom and welcomes you to join us.

THANKS exists in all faiths.

Pat Houk, Chair



At left: Interfaith Committee members read Maya Angelou's poem "Amazing Peace" at our annual Tree Lighting in the Lobby to help kick off the holiday season.

At right: The Dining Team put on a delicious Christmas Day dinner for residents and family members.

Photo shared by Harriet Fein.



New Paltz Village Mayor & Town Supervisor to speak here on January 15th

Do you sometimes wonder why we live in *both* the Town & Village of New Paltz ?

What do each do for us ? Do their functions overlap ? After all the talk about consolidation, why do we still have both? What are the major issues facing each ?

The political Affairs Committee has invited Village Mayor (Tim Rogers) and Town Supervisor (Neil Bettez) to meet with Woodland Pond residents to address these and other questions on **Tuesday, Jan. 15 at 7:00 p.m.** in the Performing Arts Center.

Dorothy Jessup, for the committee

Health Center Committee News

Charlene McCumber, Assisted Living Nurse Manager in the Health Center, was a guest at the November 2018 Health Center Committee meeting. She discussed the policy of rotating staff between Assisted Living and Garden View. There is less "us and them" in the staff's feelings toward another unit. With fresh eyes in a unit come great ideas. One or two familiar staff were left on each unit to help ease the transition with the rotated staff. The rotation policy will Continue, but less often than when it first began.

Marin Lott, Health Center Activities Director, is spearheading a grant with the New York Council of the Arts to bring in the Barefoot Dance Company to work with all residents in the Health Center.

Skilled Nursing staff are required to periodically submit to the State minimum data assessment on residents. Benchmarks are established, and this is what drives the Star rating. It is updated quarterly for public consumption. We are ranked the highest in the three area counties.

An Assisted Chair Device has been purchased to use in the stairway for evacuation purposes when the elevator can't be used. A second one will be purchased in January.

The dining room renovation in Garden View is to begin in early January.

Joyce Gartrell

Additional Special Events This Month

Saturday, Jan. 19 at 2 p.m. – Meet the Author! Join author and WP resident Dr. Randolph Estwick, M.D., FACP, to discuss his latest book, *Substance Abuse and Addiction: An Epidemic, an Emergency and a Disaster*. The book looks at the growing epidemic of substance abuse and addiction in rural communities, school systems and in senior citizen communities. The author postulates a new approach to the problem which targets the consumer, the victims. Books will be available for purchase. [PAC]

Martin Luther King Jr. Day Observance

To commemorate the life of Dr. Martin Luther King and his inspiring legacy, Rea Stein and June Finer will lead a special program on **Monday, Jan. 21 at 7:00 p.m.** in the Performing Arts Center. Watch for details about the program soon.



New Committee is Formed

The Residents' Council has created a new, standing committee: The Physical Plant Committee. Its function is to serve as an interface between the Council, management, and residents. Towards this end its meetings will always be open to residents. Meetings will be held, for now, on the **first Wednesday of each month, at 10 a.m.** in the Conference Room.)

Karl Rodman has been named chairman of the committee. Phil Kissinger is secretary. If you have any concerns relating to operation of the physical plant, feel free to pass them along to Karl or to Phil, or to bring them up at one of our meetings.

Karl Rodman, Chair

A Note from the Décor Committee

Thanks to all who have participated in providing the wonderful displays in our Lobby curio cabinet throughout 2018. We do have a few open months available for 2019 if you have a special collection you'd like to share. Contact Vivian Stoner and she will work with you to schedule your exhibit.



Monthly Classes

- * Watercolor class will meet **Monday, Jan. 7** and **Monday, Jan. 21 from 10 a.m. - noon** in the Art Studio.
- * Water Aerobics with Janis - **Mondays at 10 a.m.**
- * Self-led Yoga Class meets **Mondays and Fridays from 10-11 a.m.** in the PAC
- * Italian class meets **Mondays at 1 p.m.** with Rosemary Cohen in the Classroom.
- * Memoir Writing class meets **Tuesday, Jan. 8** and **Tuesday, Jan. 22 at 3 p.m.** in the Conference Room.
- * Chair Yoga with Janis - **Tuesdays and Thursdays at 9 a.m.** in the PAC.
- * Self-led Strength Class meets **Tuesdays and Thursdays from 10-11 a.m.** in the PAC.
- * Chi Kung with Janis - **Wednesdays at 10 a.m.** in the PAC.
- * Water Aerobics with Rachel - **Thursdays at 9 a.m.**
- * Tai Chi class meets **Thursdays at 3:30 p.m.** in the PAC.
- * Self-led Water Class coordinated by June Finer meets **Fridays at 8:50 a.m.**

January Committee Meetings

Physical Plant Committee: **Wednesday, Jan. 2 at 10 a.m.** (Conference Room)



Design Décor Committee: **1st and 3rd Thursdays at 1 p.m.** (Apt. 303)

Political Affairs Committee: **Monday, Jan. 7 at 11 a.m.** (Classroom)

Library Committee: **Monday, Jan. 7 at 1 p.m.** (Library)

Dining Services Committee: **Tuesday, Jan. 8, 10:30 a.m.** (Game Room)

Welcome Committee: **Tuesday, Jan. 8 at 11 a.m.** (Classroom)

Finance Review Committee: **Tuesday, Jan. 15 at 1 p.m.** (Classroom)

Mill Brook Preserve Committee: **Friday, Jan. 18 at 3 p.m.** (Classroom)

Health Center Committee: **Wednesday, Jan. 23 at 1 p.m.** (Conference Room)

Interfaith Committee: **Monday, Jan. 28 at 11 a.m.** (Classroom)

Please refer to your January calendar for listings of weekly activities and special events. Be sure to continually watch for any updates or changes on the *Connected Living* screens!



Life at Wood

Scenes Around Our Community



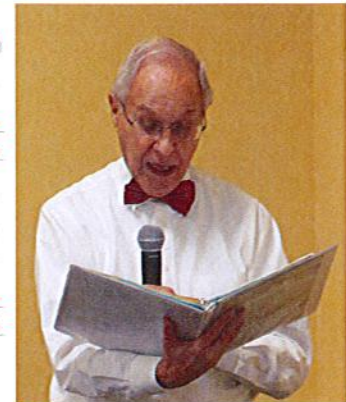
Our newest musical group of dulcimer players participated in our holiday concert.



"Santa" Tom Natoli greets the young sons of Pondalier director Dorcinda Knauth (baby Leander) and accompanist Stacy Grady (2-year-old Jaxon) at the Pondalier holiday concert.

What a wonderful holiday season we enjoyed ~ full of music, laughter and joy. Here's to a bountiful New Year to all!

OH HAPPY HOLIDAYS!



Pondalier member Shalom Schwartz reads the Hebrew words for one of the Hanukkah songs the group performed at the holiday concert.



At left: The Playreaders Groups gave two performances of a lovely reading of Dylan Thomas's story, "A Child's Christmas in Wales" as part of the many offerings of special holiday programs.



Dick Barry, representing the Woodland Pond Board of Directors, was one of the servers for the Staff Holiday Party.



Roger Leonard's one-man rendition of Charles Dickens's beloved holiday classic, "A Christmas Carol," is a special Woodland Pond annual tradition.



Gimmy Esser shares a treasured family ornament during the special Holiday Women's Tea.

land Pond

Thank You, from Resident Services!

The Resident Services Department expresses heartfelt thanks to the many residents who lent a willing hand and shared their talents during the holidays by helping us decorate around our community, and leading or performing in the various holiday programs. *We appreciate you!*



Above: The Pondaliers offered another wonderful (three!) performances of holiday music.

At left: President/CEO Michelle Gramoglia offered heartfelt greetings to all during our Tree Lighting in the Main Lobby to officially kick off the holidays at Woodland Pond.



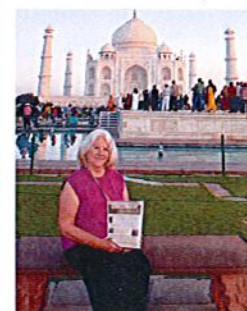
Anna Ritter, Ellie Eilenberg and Nessie Karp enjoy visiting together during the Hanukkah Party.

Woodland Life's Travels to ... Salem, Mass, plus Bhutan and India!



While visiting Salem, Massachusetts a few months ago Ginny Cannon toured the House of Seven Gables, where she found posted on the wall the genealogy of Nathaniel Hawthorne and posed with our newsletter in front of it. "No matter how hard I tried, I could not make a connection to my Salem 'ancestor!'" Ginny quipped.

The newsletter traveled with Cynthia Lee during her November 2018 trip with Overseas Adventure Travel to Bhutan, where she hiked up to the Tiger's Nest Monastery, built in 1692 and perched on the side of a Himalayan mountain at 10,240 ft. She also took the



newsletter to the Taj Mahal in Agra, India.

If you are planning a trip to an interesting, *distant* location, be sure to pack the latest issue of *Woodland Life* into your suitcase, bring or send back a photo of yourself with the newsletter and it may be shared in a future issue. Let's see where in the world our newsletter travels!

A Thought for the New Year

"You are never too old to set another goal or to dream a new dream."



[C.S. Lewis]

Special Interest Groups

Pinochle Group: **Mondays, 12:30 p.m. in the PAC Annex.**

Dream Interpretation Group: meets the **2nd and 4th Mondays at 5 p.m.** in the Art Studio.

Handbell Ringers: **Tuesdays at 1 p.m.**, Art Studio.

Short Story Groups: This month Group I meets at **4 p.m. on Tuesday, Jan. 15** and **Tuesday, Jan. 29** in the Classroom. **Group II** will meet on **Tuesday, Jan. 8** in the Art Studio and **Tuesday, Jan. 22** at **4 p.m.** in the Classroom.

Book Group: meets **first Tuesdays at 7 p.m.** in the Classroom

Canasta Players: **Wednesdays at 12:30 p.m.** in the Game Room.

Current Events Group: **Wednesdays at 4:30 p.m.** in the Classroom. (No session on Jan. 23.)

The Quilters: the **second Thursday at 11 a.m.** in the Art Studio.

The Playreaders: **each Thursday** in two groups: Group I at **2:30 p.m.** and Group II at **4:15 p.m.** in the Classroom.

Chess Players: **Thursdays at 7:00 p.m.** in the Game Room.

Dulcimer Players: **Fridays at 11 a.m.** PAC Annex.

Mah Jongg Players: **The first 3 Fridays at 1 p.m.** in the Game Room; **4th Friday** in the PAC Annex.

Poetry Group: meets the **last Friday** of each month at **7:00 p.m.** in the Classroom.

Evening Rummi-Kub: **nightly at 7 p.m. (Sundays at 5 p.m.)** in the Game Room.

Daytime Rummi-Kub: meets **Saturdays at 2 p.m.** in the Game Room.

Square Dancers Do-Si-So!



Square dancing sessions this month will be at **7:00 p.m.** on **Wednesday, Jan. 9** in the Assisted Living Dining Room and **Wednesday, Jan. 23** in the PAC Annex. No partner is necessary ... come and try it out!

From the Woodland Pond Library

The Woodland Pond library will begin to accept donations of books starting January 7, 2019. The following policy will apply:



* Donation of all books by current Independent Living residents must be cleared by two members of the Library Committee.

* If an Independent Living resident is moving to the Health Center and wishes to donate books, the books must be approved by two members of the Library Committee who will visit the apartment or cottage to evaluate the books. The donor will be responsible for delivering the approved books after making arrangements with the committee members.

* Only books published within the past five years will be considered, with some exceptions.

Please DO NOT just leave books in the Library to be added to the collection but contact a Library Committee member for acceptance. Library committee members: Faye Bishop, Virginia Cannon, Don Coon, Alice Cross, Joyce Gartrell, Mary Gellhaus, Larry Randall, Cal Schnitzer. Also, Lynn Clarke, Paul Bateman, Purnima Schachter, and Marjorie Lewis.

Virginia Cannon, for the Library Committee

Book Group



Our next Book Group will meet on **Tuesday, Jan. 8** and due to changes in timing for evening programs **we will meet at 7 p.m.** from now on. Our meetings are in the Classroom and newcomers are always welcome!

Ann Rodman

Mah-Jongg Tournament at the Pond

On **Friday, Jan. 11** from **9 a.m.- 3:30 p.m.** a mini mah-jongg tournament will be held at Woodland Pond. Resident as well as non-resident players are welcome. There is a \$20 tournament fee which will be used as prize money for special hands and high scores. Regular mah-jongg will be played during the tournament with a \$5 pie. Lunch and drinks will be provided.



Registration for five tables has already been received, so any additional interested players will be placed on a waiting list. For registration or questions, please call Ann Hanover at 845-256-5595.

Wellness Notes



It's never too late to promote your wellness! As the New Year arrives, it's an opportunity to reflect and embrace your health and wellness condition.

Here are some simple steps to promote your wellness:

- * Review your Emergency Health Packet – assure there isn't a need for any changes. Blank forms are available outside the Wellness Nurse's office.
- * Prevention is key – review regular follow ups with your Healthcare Professionals – make appointments as necessary.
- * When you go to an office visit be prepared to talk about your medications, tests, illnesses, even if you think they are small, like a cold for five days.
- * Prevent a fall – assure pathways are clutter-free, there is good lighting, and wear shoes that support and fit well. If you feel your balance and strength have changed consider a Physical Therapy referral from your doctor's office.
- * Define and aim toward some health and wellness aspirations for the year - keep it simple and achievable.
- * Exercise – even a few steps daily can make a difference! Join an exercise class you have never attended. Try Yoga, Chi Kung, Water Walking, or our Strength class. Walk a few extra “laps” in the hallway where you live – it's beneficial.
- * Swimming is a good way to get regular physical activity. Water-based exercise can really improve the use of joints for people with arthritis and other chronic conditions. Water-based exercise can also improve mood and reduce anxiety. Reach out to other residents and go for a swim!

Don't miss the chance to try new experiences and meet new people. Participating in something different does stretch your comfort level. This can be rewarding in unexpected ways! Friends can offer great comfort, support, encouragement, companionship and much more.

Happy New Year! Wellness Wishes for your Best year yet!

Mary Jo

Mary Jo Murray, RN, Wellness Nurse, ext. 5901

Exercise into the New Year!

A reminder to start off the New Year on the right (and left!) foot and take advantage of the variety of exercise classes you can join at any time: Water Aerobics, Yoga, Chair Yoga, Chi Kung, Tai Chi, and Strength Class.



You will find days and times on your monthly calendar.

Free Minor Eyeglass Repair

Optician Diane Melnick will be here **Wednesday, Jan. 9** from **10-11 a.m.** in the Library.



Support Groups Welcome You

The Hearing Loss Support Group meets **Wednesday, Jan. 2** at **9:30 a.m.** in the Game Room.



The Caregivers/Care Receivers Support Groups sponsored by the Office on Aging and Jewish Family Services of Ulster County will meet **Monday, Jan. 7** from **9:15 – 11:00 a.m.** in the Classroom and Game Room.

The Bereavement Group facilitated by Hospice meets this month on **Wednesday, Jan. 9** and **Wednesday, Jan. 23** from **10-11:30 a.m.** in the Classroom.

Monthly Reminder

Your Emergency Packet should have the **most current** items:

Emergency contacts listed with phone numbers

Medication list – hospital preference, primary doctor /address / phone#

Copy of all your insurance cards - front and back of cards

Copy of Healthcare Proxy, Living Will, Advance Directives.

The MOLTS form

Forms are available at the Wellness Nurse's office.

Applauds Program Salutes Employee Service



Last month these Woodland Pond employees received commendations from residents for exceptional service:

Steve Berry	Lisa Cea	Mark Baker	Debbie Hull
Denise Kennedy-Shane	Jason Irish	Sean Paddock	Elise Ludewig
Denise Petersen	Steve Mach	Ronnie Licata	Cassidy Ginn
Lauren Scott	Nicholas Gomez	Marlee Smith	John Hoey
Jonathan Papin	Delon James	Sarina Pepper	Kaitlyn Giangrasso
Jasmine Colon	Elaine Griffiths	Samantha Gonzalez	Amanda Avello
Lyric Randolph	Joni Maree Paternella	Coreen Sanchez	Meghan Foster
Penny Brancucio	Maria Jablonka Campbell	Dawn Marie Allan	Ashley France
Jordan Upright	Melissa Henneberger	Eyon Dunkley	

Applauds forms are available at the Concierge Desk. They are given to the Human Resources Department. If your nomination is received after the deadline, it will be included in the following month's issue.



Photo by Tania Reyes

Monthly Birthday Party is Tuesday, Jan. 8



January celebrants are invited to attend a birthday party with cake provided by Shoprite of New Paltz on **Tuesday, Jan. 8 at 3 p.m.** in the Game Room. Celebrating this month are:

Celebrating this month are:

- | | |
|---------------------------|-------------------------------|
| Shalom Schwartz - Jan. 1 | Anne Gordon - Jan. 18 |
| John Fracasse - Jan. 3 | Norma Kieley - Jan. 19 |
| Virginia Kohli - Jan. 4 | Dorothy Jessup - Jan. 20 |
| Marge Satter - Jan. 6 | Gerry Russo - Jan. 20 |
| Adele Warshawsky - Jan. 6 | George Meyers - Jan. 21 |
| Faye Bishop - Jan. 7 | Allen Fischer - Jan. 22 |
| Mary Gellhaus - Jan. 10 | Joyce Schiff - Jan. 25 |
| Jane Johnston - Jan. 10 | Walter Kaufman - Jan. 26 |
| Esther Reisman - Jan. 10 | Bill Swetow - Jan. 27 |
| Phil Kissinger - Jan. 11 | Barbara Robertiello - Jan. 28 |
| Ginger Thomas - Jan. 13 | Mary Welch - Jan. 28 |
| "Corkie" Deegan - Jan. 17 | Jean Crawford - Jan. 29 |
| Joan LaChance - Jan. 17 | |



Welcome, New Residents!



- Florence Weston ~ Apt. 326, Central Wing**
Barbara and John DeGilio ~ Apt 300, South Wing
Edith Soll ~ Apt 627, Central Wing
Harriet Ross ~ Apt 112, South Wing
Myrna Weisselberg ~ Apt 114, South Wing

The Welcome Committee will host its next New Resident Social/Orientation on **Friday, Jan. 25 at 2 p.m.** in the Game Room.



ArtScope Exhibit



Walter Pokowitz

Hunched over his patients by day and poised before his easel at night, Dr. Walter Pokowitz excelled in both disciplines. This highly regarded, well-known local dentist and artist exhibits an impressive array of his Expressionist-style paintings.

**Opening Reception: Monday, Jan. 7
at 7:00 p.m. in the PAC**



ArtScope Film

The Life of Andrew Wyeth

Most popular 20th century American realist painter famous for the quality of realism and details in his work, yet the art world remained critical of his work. Notable for portraits of neighbors and vivid landscapes in the surrounding area of Chadd's Ford, PA.

Tuesday, Jan. 22 at 7:00 p.m. in the PAC

Creativity flourishes at Woodland Pond

Meet the Winners of the Employee of the 2nd Quarter and Employee of the 3rd Quarter
Ryan Kraehmer, Porter, and Petra Heotzler, HC Dietary Aide

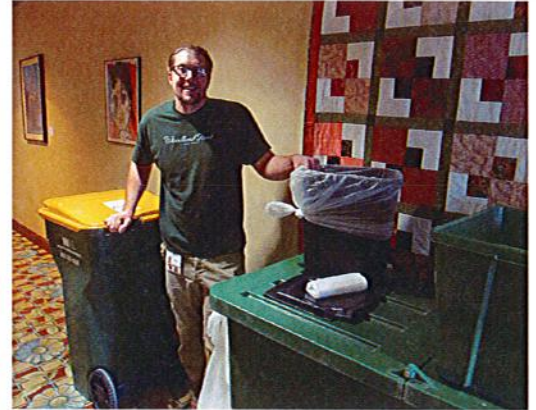
by Halema Hassan

Ryan Kraehmer ~ 2nd Quarter Honoree

A native of the Hudson Valley, Ryan attended Wallkill High School and Dutchess Community College, where he earned his degree in Humanities. He lived in Missouri for 2½ years, attending a Bible Institute at a non-denominational Bible Church camp where he earned a degree in Family and Youth Ministry. He used that degree to work at two different boarding schools for troubled teens.

Returning to this area, Ryan worked at the Mary's Avenue Campus of Health Alliance as a kitchen utility worker, then transferred to Woodland Pond, working in the kitchen for 1½ years, then as a Porter for 2½ years. We have all seen Ryan throughout the campus, smiling as he does a very difficult job. He likes his job, as “it gives variety, and I meet a lot of residents and staff.” For hobbies, Ryan enjoys hiking, kayaking and reading, especially non-fiction. He enjoys visiting his younger brother, sister-in-law, and niece and nephew in Pennsylvania.

Grounded in his faith, Ryan feels blessed to have all that he needs. He believes that “contentment comes from wanting what you have, not wanting what you don’t have. I take life one step at a time, and I believe in blooming where I am planted.” Ryan is grateful for being named Employee of the Quarter, and would like to “give the Glory to God.”



Ryan Kraehmer is always ready to offer a smile and a helping hand to residents and his fellow employees.

Petra Heotzler ~ 3rd Quarter Honoree



Petra Heotzler’s winning smile and caring nature is just part of what makes her special to residents like Carol Nectow.

Petra was born in Kassel, Germany, and immigrated to the Hudson Valley with her family when she was 3-years-old. She attended Middletown High School and graduated from Orange County Community College with a major in Business.

Petra worked for 26 years as a legal secretary. While she liked the work, she needed a change and saw Woodland Pond’s ad for a Food Service Worker. She was hired in 2012, and her only regret was “that I had not done it sooner.” She works in our Skilled Nursing facility, serving breakfast and lunch in the Dining Room; she also prepares and brings trays to those residents who eat in their rooms. “I fell in love with the residents,” she observes, and “I also enjoy my colleagues and supervisors.”

Petra and her husband live in Wallkill, and have one son. She enjoys gardening, reading — especially mysteries, watching scary movies, and occasional trips to Atlantic City. She is honored to be named Employee of the Quarter, and hopes to be here “forever!”



100 Woodland Pond
Circle
New Paltz, NY 12561
(845) 256-5600

Publication Designer
Gretchen Daum

Proof Readers
Sarah Hull
Bernice Leonard

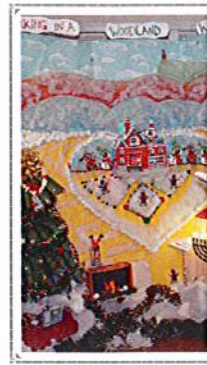
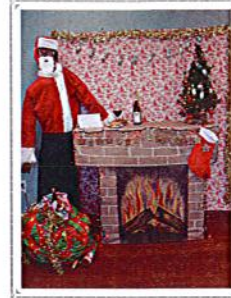
Photography
Virginia Cannon
Gretchen Daum
Harriet Fein
Cynthia Lee
Tania Reyes

Contributing Writers
Virginia Cannon
Al Chasan
Gretchen Daum
Michelle Gramoglia
Ann Hanover
Halema Hassan
Sarah Hull
Mary Jo Murray
Ann Rodman

Assemblers/Distributors
Phyllis Bulgatz
Bernice Hummel
Sally Soraci

The Staff Wall Decorating Contest

Everyone enjoyed the Employee' Team Wall Decorating Contest for the holidays — the friendly competition brought out some terrific creative ideas!
[photos by Tania Reyes]



January Highlights at a Glance

Monday, Jan. 7 at 7:00 p.m. - ArtScope Opening Reception: works by Dr. Walter Pokowitz (PAC)

Wednesday, Jan. 9 at 3:30 p.m. - *Fund Day* Celebration (Game Room)

Wednesday, Jan. 9 at 7:00 p.m. - Piano Concert in memory of Steffi Lauer (PAC)

Saturday, Jan. 19 at 2 p.m. - Meet the Author: Dr. Randolph Estwick (PAC)

Monday, Jan. 21 at 7 p.m. - Martin Luther King Commemoration Program - PAC

Tuesday, Jan. 22 at 7:00 p.m. - ArtScope Film: *Andrew Wyeth* - (PAC)

Saturday, Jan. 26 at 3 p.m. - Bill Swetow's 100th Birthday Concert with pianist Vladimir Feltsman (PAC)

Want to share the newsletter with your family and friends?

They can read it online at www.wpatnp.org

