



Peter Becker Community
Embracing life's treasured moments.

Chit Chat

Campus Programming to Enrich Your Mind Body & Spirit

Residential Living



Inside

Spiritual Connections	2
News & Announcements	3
Birthdays	3
Trips	4
Support Groups, Activities,	5
Volunteer Corner, Auxiliary, Life Enrichment	6
Movie Nights & Book Club	7
PBC TV Programming	8

BERGINS CHOCOLATE

The Auxiliary is selling 1/2 lb. boxes as a fundraiser. Sign-up sheets will be in the lobby at Maplewood and on the Auxiliary bulletin board outside of the Courtyard at the Ridge from Nov. 13 to Nov. 30. Candy pick-up will be Dec. 8 from 10am to 12pm in the lobbies of each building. **PRE-ORDERS ONLY.** There may be some boxes available for purchase Dec. 8 at pick-up time.

Mission

Our Mission, based on the Church of the Brethren values of service, integrity, simplicity and love, is to meet the physical, spiritual and emotional needs of all members of the Peter Becker Community.

Featured Activities

Mark Your Calendars ... Everyone Welcome

Willow Creek Bluegrass

Thursday, Nov. 2 at 7pm in the Chapel

Semi-Annual Memorial Service - All Residents Welcome

Friday, Nov. 3 at 2pm in the Chapel

Join us in remembering our residents who have died from April 1 through September 30, 2017. The purpose of this service is to come together to honor residents from our community who have died and recognize the loss we feel in their passing.

Variety Show

Thursday, Nov. 9 at 2pm in the Arbor Conference Center

Veterans Day Celebration

Friday, Nov. 10 at 2pm in the Orchid Terrace

With entertainment by the Cheers Band

"Living Smarter" Education Series

Tuesday, Nov. 14 at 10am or 7pm in the Arbor Conference Center

Presenter: PBC social worker Jackie Kees.

Topic: "Supporting Friends and Family in the Early Stages of Memory Loss"

Please register online at the PBC website or by calling the Maplewood receptionist at 4011. Open to the public. Invite your friends and family.

4H Bunny Hop

Thursday, Nov. 16, at 6:30pm in the Orchid Terrace

Lebanon County Youth Choir

Friday, Nov. 17 at 7pm in the Chapel

Thanksgiving Eve Service

Wednesday, Nov. 22 at 2pm in the Chapel

Led By Chaplain Merlin Hedrick

Please note: there is no evening service this week.

Cookie Walk

Friday, Dec. 1 from 3-5pm in the Orchid Terrace

Holiday music by Kirk Maurer, photos with Santa and more!

Bakers Wanted! Please drop off cookies to the Orchid Terrace on December 1 between 8am and noon. Thank you!

Chaplain's Corner

By Merlin Hedrick

"Choosing Gratitude"

Dr. David Soper, in *God is Inescapable*, suggests that the main difference between a prison and a monastery is the attitude of those who live there. It's the difference between griping "This is my punishment," and gratefully acknowledging "This is my privilege." In life, people in the same circumstances respond very differently depending on their attitude. Consider Matthew Henry, the famous scholar, who was robbed of his purse by thieves. He wrote in his diary: "Let me be thankful first, because, I was never robbed before; second, because, although they took my purse, they did not take my life; third, because, although they took my all, it was not much; and forth, because it was I who was robbed, not I who

robbed." Would any of us have found so much to be thankful for in that circumstance? We all experience robberies or losses in life. Yet the choice to allow resentment and despair to imprison us or to look for the blessings that remain is up to us. As we approach the Thanksgiving holiday, may we remember that each of us, no matter what situation we find ourselves in, have the choice between life in a prison or a monastery.

Pastoral Care Video

Merlin is choosing an inspirational video to be aired on PBC TV (channel 1979) each month. See page 8 for the PBC TV schedule.

Bulletins Available: If you watch the Sunday worship service on channel 1979 and would like a large print bulletin so you can follow along, please contact Merlin Hedrick at ext 6817.



Spiritual Connections

Weekly Chapel Services

Sundays at 10:30am

Also live on Channel 1979

Semi-Annual Memorial Service

Friday, Nov. 3 at 2pm in the Chapel

Evening Services

with Worship Leaders

7pm in the Chapel

Wednesday, Nov. 1

"The Making of the King James Bible" (video)

Wednesday, Nov. 8

Rev. Kathy Andonian, Holy Spirit Episcopal

Wednesday, Nov. 15

Mike Bishop, Blooming Glen Mennonite Children's Choir

Wednesday, Nov. 22, at 2pm

No Evening Service

Thanksgiving Eve Service

Wednesday, Nov. 29

Rev. Brad Melton with Jon Leight, St. Luke's UCC

Roman Catholic

Mass/Communion

Wednesday, Nov. 8 at 10:45am

Chapel - Led by

Fr. Chung, St. Maria Goretti

Roman Catholic Church

Church Fellowship Hours

Schwenkfelders

Friday, Nov. 10 at 2pm

RV Craft Room

Indian Creek COB

Friday, Nov. 17 at 2pm

RV Craft Room



Bible Studies

Neighborhood Bible Study

Tuesdays at 10:30am in the Boxwood Conference Room
Now studying the Gospel of Matthew

Resident Led Women's Bible Study

Wednesdays at 1:30pm in the Maplewood Club Room

RL Bible Study – "Perfecting in Grace"

Fridays through Nov. 3 at 10:30am in the Board Room
Led by Chaplain Merlin Hedrick

Chaplains' News

Chaplain Coffee Talk

Monday, Nov. 13 at 10:30am
Arbor Conference Center
An informal discussion time with Chaplain Merlin Hedrick. Complimentary coffee, French vanilla cappuccino, hot chocolate and tea will be provided. Come ready to share how you stay thankful and positive.

Sharing and Prayer Group

Monday, Nov. 27 at 10:30am
Maplewood Magnolia Room
Come to lift up personal and community praises and prayer requests to God. Led by Chaplain Merlin Hedrick.

Fall Spirituality Group

Thursday, Nov. 2 at 3pm
Arbor Conference Center
Bob Coble and Merlin Hedrick will conclude a three-part program focusing on the book, *Falling Upward*, by Franciscan priest Richard Rohr. **This group is open to all residents.** We will have a 90-minute session with time for input and discussion. Final session topic: How do we make this work in our lives? Copies of the book can be borrowed by calling Merlin Hedrick at 215.513.6817.

Meetings

ANNUAL MEETING

All Residents Welcome

Wednesday, Nov. 15 from 3pm to 5pm
Arbor Conference Center
All residents are invited to attend Peter Becker Community's Annual Meeting to meet the 2017 Board of Directors and to hear reports from the CEO, Board Chair, Auxiliary President and Auditors.

2018 Flower Show Theme Announced

"Legendary Gardens"

From the depths of the oceans to the heavens above, we will dynamically portray legendary gardens using flowers as our inspiration. Get involved as we interpret the enchantments of Ireland, the allure of Atlantis, the head-turning Hanging Gardens of Babylon and the magnificent Mount Olympus.

Flower Show Kick-Off Meeting:
Feb. 2, 2018 at 10am

Flower Show Production Teams:
Feb. 5 – 13, 2018

Show Dates: March 15-17, 2018

Getaways

Rainbow Dinner Theater Sex Please, We're Sixty

Thursday, Nov. 2
RVL 9:30am - MWC 9:45am
Activity fee is \$59.00, includes meal, show and transportation.

ROMEOS – Dublin Diner (Retired Old Men Eating Out)

Thursday, Nov. 9
MWC 8:45am - RVL 9am
Activity fee is \$4.00, meal at your own expense. RSVP by Nov. 7.

Coventry Mall

Tuesday, Nov. 14
RVL 10:15am - MWC 10:30am
Activity fee is \$7.50, lunch at your own expense. RSVP by Nov. 10.

Juliets - Plaza Azteca (Just Us Ladies Interested in Eating Together)

Thursday, Nov. 16
RVL 10:45am - MWC 11am
Lunch followed by time to shop at Boscov's in the Plymouth Meeting mall. Activity fee is \$4.50, lunch at your expense. RSVP by Nov. 19.

Shady Maple, Goods and Flower & Home Market Place

Friday, Nov. 17
RVL 9:15am - 9:30am
Lunch and free time to shop. Activity fee is \$25.25, includes lunch. RSVP by Nov. 10.

Fulton Theater & Miller's Smorgasbord

RVL 10:45am - MWC 11am
Sunday, Nov. 19
A Musical production of "A Christmas Story" followed by dinner at Miller's. Activity fee is \$104, show and meal included. This trip is full.

DCP Theatre Miracle on 34th Street

Sunday, Dec. 3
RVL 1pm - MWC 1:15pm
Activity fee is \$18.50. RVSP by Nov. 17.

Allen Organ Christmas Concert

Thursday, Nov. 30
MWC 4pm - RVL 4:15
Dinner at John's Plain and Fancy Diner in Quakertown then concert in Macungie. Activity fee is \$28.00, includes ticket, meal at your expense. RSVP by Oct. 14.

Philly Mansion Tour

Tuesday, December 5
RVL 8:15am - MWC 8:30am
Tour Strawberry Mansion, Laurel Hill and Cedar Grove. Activity fee is \$57.00, includes tours and box lunch. RSVP by Nov. 1.

Coventry Mall

Thursday, Dec. 7
MWC 9:15am - RVL 9:30am
Activity fee is \$7.50, lunch at your own expense. RSVP by Dec. 1.

Lansdale Community Concert

Saturday, Dec. 9
RVL 6:15pm - MWC 6:15pm
Transportation is for ticket holders only. Activity fee is \$2.50. RSVP by Dec. 1.

Christmas Light Tour

Tuesday, Dec. 12
Sign-up for 5:30 or 7:30pm.
Light tour of our surrounding neighborhoods. RSVP by Dec. 9.
Hot chocolate and cookies provided in Ridgeview and Maplewood lobbies.



Terry Page's Christmas Open House

Wednesday, Dec. 13
RVL 1:45pm - MWE 2pm and RVL 3pm - 3:15pm
Join Terry for a tour of her beautifully decorated home. No fee. RSVP by Dec. 1.

Dutch Apple Dinner Theater A White Christmas

Thursday, Dec. 14
RVL 4pm - MWC 4:15pm
Activity fee is \$71.00. RSVP by Nov. 1.

Happenings

Variety Show

Thursday, Nov. 9 at 2pm
Arbor Conference

YMCA Orientation

Monday, Nov. 20 at 10am
Wellness Studio
Come meet Alicia Fergus and listen to all that the Y has to offer. Light refreshments provided.

Christmas Decorating at Ridgeview Estates

Tuesday, Nov 28 at 9:30am
Cookies and refreshments will be available.

SAVE THE DATE:

New Year's Eve Party

Sunday, Dec. 31, 8 pm - 12am
Arbor Conference Center
All Residential Living residents & guests are invited to attend the New Year's Eve Party at Maplewood. Light refreshments and Entertainment provided. More detailed information will follow in the December Chit Chat.

All trips are billed on your monthly statement and are nonrefundable for cancellations. Contact Irma Burns at 215-513-6823 or 215-703-4182 in Life Enrichment to reserve your seat.

Activities

Jewelry Making with Gloria Rich

Tuesday, Nov. 7 & 21 at 1:30pm
Maplewood Craft Room
Learn how to make earrings, bracelets or a necklace. Supplies provided.

Manicures

Wednesday, Nov. 8 at 2pm
Tuesday, Nov. 21 at 10:30am
Maplewood Craft Room
Supplies are provided.

Just Dance

Monday, Nov. 6 and 13 at 10:30am
Wellness Studio
If you love dancing to music, then this class is for you! Just move to the music in a new approach to fitness.

Zumba Gold DVD

Mondays at 2:30pm
Wellness Studio

Don't Act Your Age

Fridays at 1pm
Arbor Conference Center
No experience necessary. \$5.00 class fee. Instructor: Madison Jeronis

New Activity

Air Hockey Table - Wellness Studio

Grab some friends and have a friendly game of Air Hockey. Contact Irma at ext 6823 if you'd like to learn how to play.

Adult Creative Coloring

Wednesdays at 10:30am
Ridgeview Craft Room
Colored pencils and books provided.

Crafters

Tuesdays at 1:30pm
Maplewood Craft Room
Make jewelry, crochet, knit or socialize.

Clubs

Bridge

Tuesdays at 1pm
Maplewood Club Room
Looking for new players. Contact Betty Schantz at ext 4108.

Veteran's Club

Monday, Nov. 4, at 1:30pm
Arbor Conference Center
We will have Erin Haselbarth from the PBC Billing Department as our main speaker. Come bring your questions and comments about your monthly statements to Erin, and you will get a clear answer. She is the center of PBC's billing universe. Other discussions will surround upcoming events such as PBC's Annual Veteran's Celebration, The POPS Salute to Veterans and our club's annual Christmas Gala. Don't miss the meeting; we are wrapping up the year with a fistful of goodies!

Smile-A-While

PBC's Humor Club
Mondays, Nov. 13 & 27 at 2pm
Maplewood Club Room
For more information, call Jeanette Schmoyer at 215-703-4072
Everyone is welcome!

Photography Club

Monday, Nov. 13 at 2:30pm
Maplewood Craft Room

PBC Computer Club

Friday, Nov. 17 at 1:30pm
Arbor Conference Center

Support

Heartstrings: An Alzheimer's Support Group

Tuesday, Nov. 28 at 3pm
Arbor Conference Center
Come and gain support from others experiencing similar daily challenges. The group offers activities and support for your loved ones while meeting. Questions? Call Jackie Kees, MSW at 215-513-6815.

FITNESS

Wellness Studio and Fitness Class Schedule

Flexibility, balance and strength are the keys to senior health. It's never too late to get started. Join us at one or all of the classes listed here for fun, fitness and overall good health.

Monday:

2:30pm Chair Exercise - RVF

Tuesday:

11am Tai Chi - WS

1:30pm Chair Exercise - WS

Wednesday:

1pm Jazzercise - WS

2:30pm Chair Exercise - RVF

Thursday:

11am Tai Chi - WS

1:30pm Chair Exercise - WS

Friday:

2:30pm Chair Exercise - RVF

Watch PBC TV for updates or changes.

Location Key

WS - Wellness Studio

RVF - Ridgeview Fitness Room



Find us on
Facebook

Please refer to the calendar for the dates, times and locations of all the activities, clubs and meetings.

Life Enrichment

By Joe Monserrat

We have so many things in our lives to be thankful for. Whether it be our health, our spouses, children, great-grandchildren and others, there is always something to be thankful for. In November at PBC, we will celebrate our thankfulness in many ways. On Friday, November 10 we have a special program to honor our veterans at 2pm in the Orchid Terrace. The Cheers Band is back to play patriotic music for our vets! The 4H Club will be bringing the Bunny Hop back to the main campus building on Thursday, November 16 at 6:30pm, and the Lebanon Youth Choir will perform on Friday, November 17 at 7pm in the Chapel. There are a lot of fun things planned in November, and I believe I speak for everyone here at PBC that we are grateful to serve our residents! I wish you all a very blessed Thanksgiving! If you have a chance, please share what you are thankful for. There will be a place to write down what you are thankful for in both reception areas. They will be collected and displayed in the Orchid Terrace by November 15.

Auxiliary News

By Ruth Swingle

As President of the Peter Becker Auxiliary, I would like to say "Thank you" for helping us raise close to \$6,000 for our Partnership Drive. The Auxiliary returns the funds raised in various ways to the Community.

This past year we gave \$40,000 to the Benevolent Fund, set aside \$12,000 for furniture in the Ridgeview Lobby, we promised \$12,000 for a Memory Board for our memory unit and continues to support the Golf Outing, Employee Week and made other minor contributions to our Community.

This is all made possible by the residents, staff and volunteers who so generously support the Auxiliary with their time, talents and resources.

I THANK YOU.

Ruth Swingle

Volunteer Corner

By Janelle Adams

Pass it On
by Julie Hebert

To thank someone as kind as you,
Would take a lot of thought.
But thankfully I've come to find,
You're not in need of a lot.

You don't like presents or anything new,
You don't even need a card.
You prefer your appreciations to be something of helpfulness,
For someone else's regard.

Your belief is great that someone else should benefit,
From a deed well done.
With this I can see how great you have been,
To always be helping someone.

So here we are to give our thanks,
To someone we are grateful for.
May you receive everything you deserve,
We only hope you get much more.

Reminder: Volunteers, please wear your badges.

Help Wanted:

Bakers needed for the Cookie Walk! Please drop off your cookies in the Orchid Terrace on Dec. 1 between 8am and noon. Thank you!



Daylight Savings Time Ends: Before you go to bed on November 4, Turn Your Clocks Back One Hour!

Movie Nights in November

Join Your Neighbors at 7pm in the Arbor Conference Center



Mon. the 6th "Star Wars: The Force Awakens"

Three decades after the Empire's defeat, a new threat arises in the militant First Order. Stormtrooper defector Finn and

spare parts scavenger Rey are caught up in the Resistance's search for the missing Luke Skywalker.

PG-13/ Action Adventure Fantasy/ 2hrs 16 min

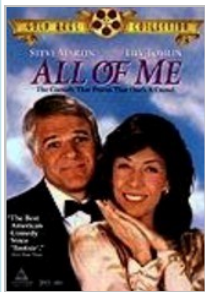


Mon. the 20th "The Glass Castle"

Adapted from the novel of the same name, this family drama follows future writer Jeannette Walls, who spends her hardscrabble

childhood on the run with her negligent artist mother and storytelling alcoholic father.

PG-13/ Biography/Drama/ 2hrs 7 mins



Mon. the 13th "All of Me"

A dying millionaire has her soul transferred into a younger, willing woman. However, something goes wrong, and she finds

herself in her lawyer's body - together with the lawyer.

PG/ Comedy/ 1hr 33mins



Mon. the 27th "Wonder Woman"

Before she was Wonder Woman, she was Diana, princess of the Amazons. When a pilot crashes and tells of conflict in the outside world,

Diana, an Amazonian warrior in training, leaves home to fight a war, discovering her full powers and true destiny.

PG-13/Adventure/2 hrs 21 mins



Feel free to bring your snacks and beverages to enjoy while watching a movie! Movies subject to availability.

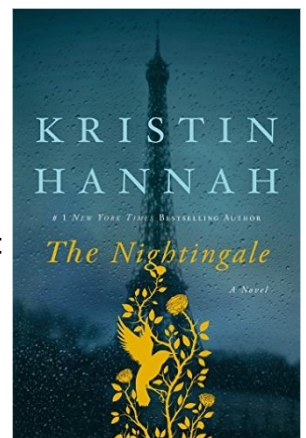
PBC Book Club

Thursday, December 7 at 2pm in the Ridgeview Craft Room

"The Nightingale" by Kristin Hannah

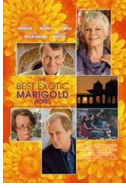
Two sisters are separated during WW II. One in Paris, one in the country.

Books are available by contacting Mary Reichley at 215-723-3288 or George Keck at 267-932-8615. You can arrange for a copy through the bookmobile or you may also purchase your own copy. Bookmobile comes to Peter Becker Community the 1st and 3rd Wednesdays of the month at 10:15am outside Ridgeview Lobby.



Movie Matinees -

Friday 2pm, Saturday 2pm & 6:30pm



Nov. 3 & 4 "The Best Exotic Marigold Hotel" British retirees travel to India to take up residence in what they believe is a newly restored hotel. Less luxurious than advertised, the Marigold Hotel nevertheless slowly begins to charm in unexpected ways. PG-13, 2012, 2h4m, Comedy, Drama



Nov. 10 & 11 "The Blind Side" The story of Michael Oher, a homeless and traumatized boy who became an All American football player and first round NFL draft pick with the help of a caring woman and her family. PG-13, 2009, 2hr 9m, Biography, Drama, Sports



Nov. 17 & 18 "The Horse in the Gray Flannel Suit" Frederick Bolton's boss has instructed him to come up with a campaign to promote a new product, and his daughter Helen's biggest wish is to own a horse herself, a dream her father cannot afford. G, 1968, 1h 54m Family, Comedy, Drama



Nov. 24 & 25 "While You Were Sleeping" A hopeless romantic Chicago Transit Authority token collector is mistaken for the fiancée of a coma patient. PG, 1995, 1h43m, Comedy, Romance

Pastoral Care Video of the Month

Tuesday, Nov. 14 at 6:30pm
& Wednesday, Nov. 15 at 10am
"Bless You Prison"

The true story of Nicoleta Valery Grossu's amazing survival in a Romanian Communist prison camp and how faith in the Lord strengthened her. 1h26m

Movie Selections are subject to availability. In the event that a movie is not available, a substitute title will air. Movie summaries are from www.imdb.com. More information, including content advisories, can be found at this site.

Cable Service Tip

Do You Like Music?

You can turn to Channels 401 thru 450 to listen to all kinds of music.

441 is "Sounds of the Season"

You can easily get to channel 1979 by starting at channel 3 and hitting "channel down" 3 times.

PBC TV Happenings

Give us 15 minutes and we'll give you the community!

What's Happening on Campus

- ◆ Announcements are scheduled to show every 60 minutes at the top of the hour. This may take up to 15 minutes.
- ◆ Activities and daily menus follow in rotation.
- ◆ Changes in scheduling, promotions and updates are reported to you on the crawl line at the bottom of the screen.

Daily Meal Specials

Seasons Café and Garden View

Daily Audio Broadcast

Each announcement is read aloud.

9 - 10am and 1 - 2pm

Sunday Services

Peter Becker Community Service

Sundays at 10:30am Live from the Chapel

The following churches provide us with videos of their latest Sunday service:

Indian Creek Church of the Brethren Service

Airs Mondays at 2pm

Zion Mennonite Church Service

Airs Thursdays at 10am

