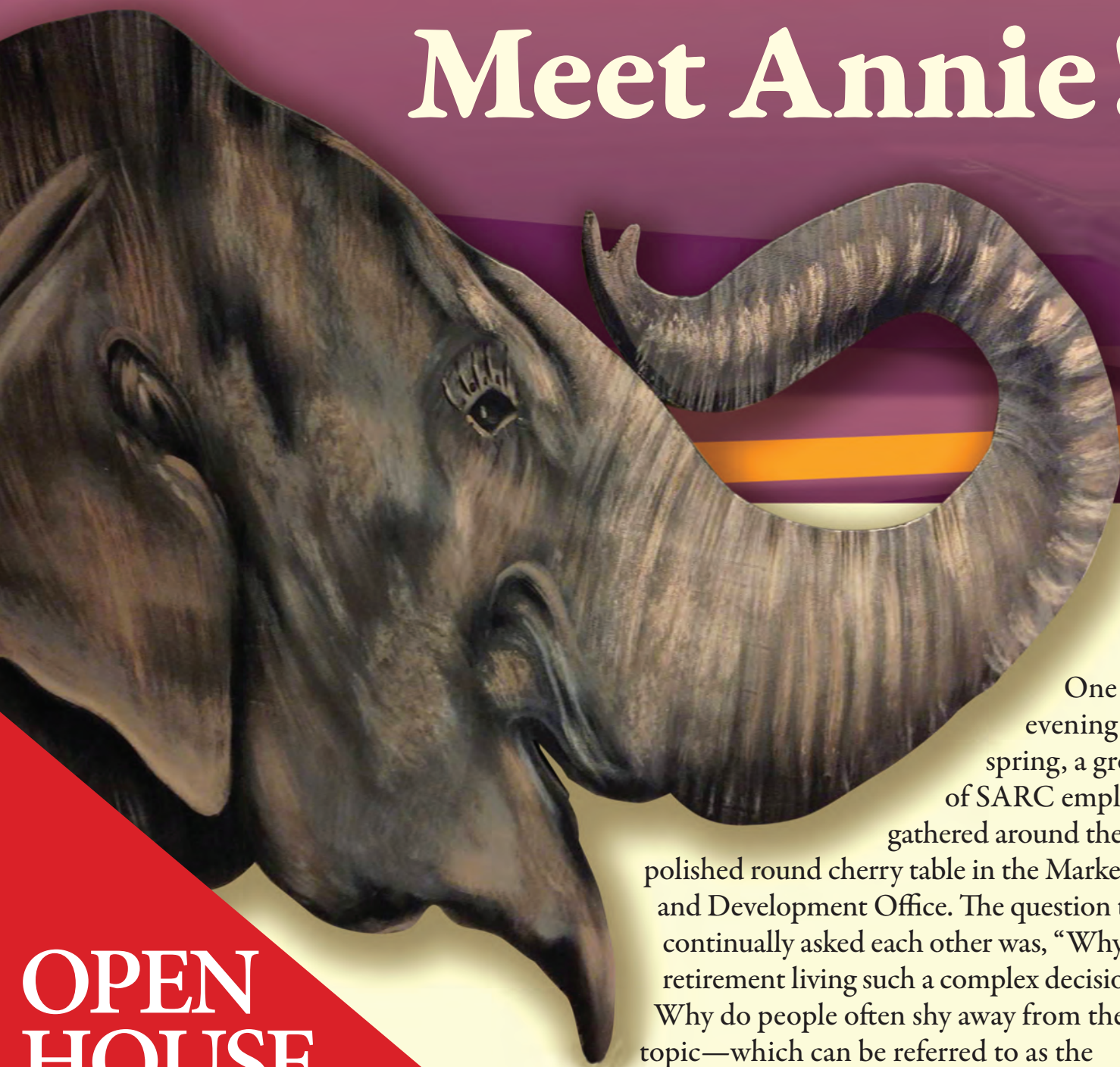


HEART *to* HEART

Meet Annie!



One rainy evening in early spring, a group of SARC employees gathered around the polished round cherry table in the Marketing and Development Office. The question they continually asked each other was, “Why is retirement living such a complex decision?” Why do people often shy away from the topic—which can be referred to as the “elephant in the room”—and put it off until it’s too late?

(continued on page 4)

**OPEN
HOUSE
Oct. 21st**

Official publication of St. Anne's Retirement Community

3952 Columbia Avenue
West Hempfield Twp., PA 17512
Main: (717) 285-5443
Admissions: (717) 285-1404
Sales Office: (717) 285-6197
Fax: (717) 285-1474

Our Mission:

St. Anne's Retirement Community, sponsored by the Adorers of the Blood of Christ, is dedicated to continuing the healing ministry of Jesus in the spirit of St. Maria De Mattias.

Board of Trustees:

Jon Farrell, Chair
Kevin Kraft, Vice Chair
Stephen Riley, Treasurer
Jeffrey Funk
Mary Ellen Glah Genoese
Sr. Joan Hornick, ASC
Dr. Jeffrey Kirchner
Dr. Maribeth Schreder LeBreton
Jack Markel, Esq.
Sr. Miriam Rau, ASC
Honorable Jeffrey Reich
Sr. Jan Renz, ASC
Sr. Fran Schumer, ASC

President

Mary Turnbaugh

Chief Financial Officer

Michele Bard

VP of Clinical Services

Ellen Haupt

VP of Community Services

Candace Keates

VP of Residential Living

Dan Lytle

VP of Human Resources

Chris Oberg

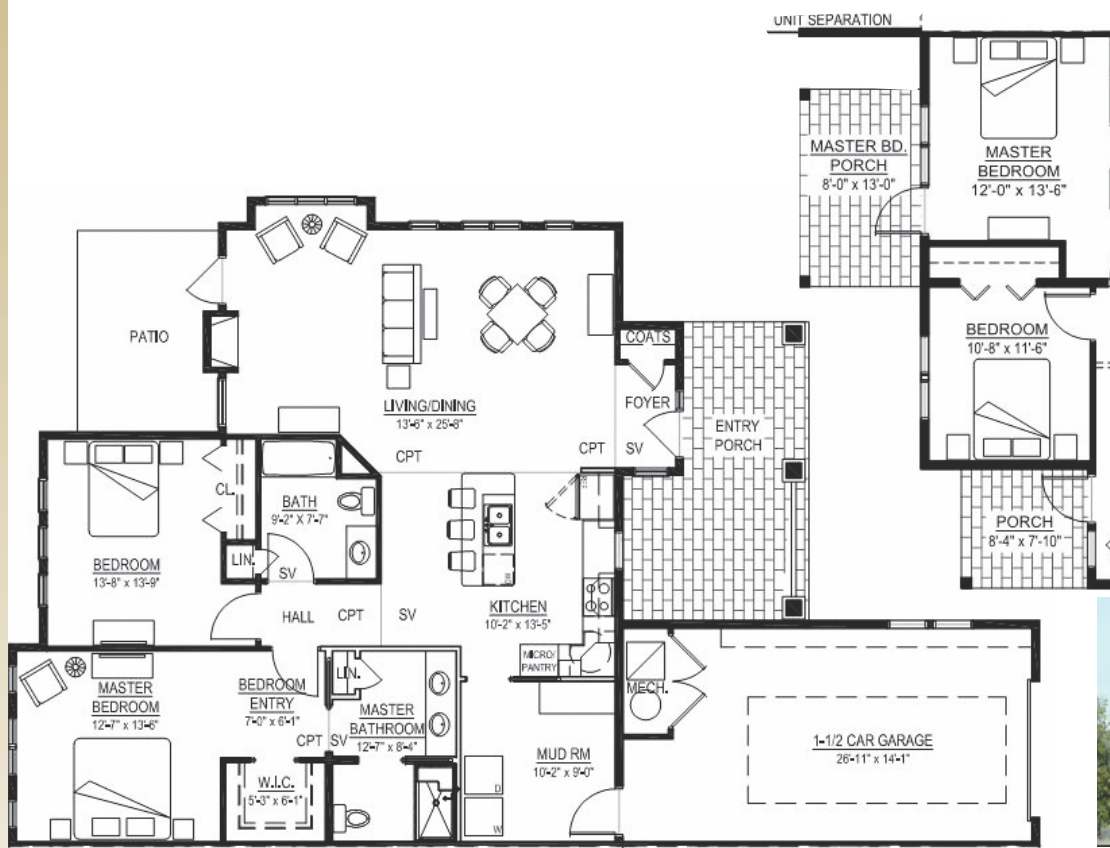
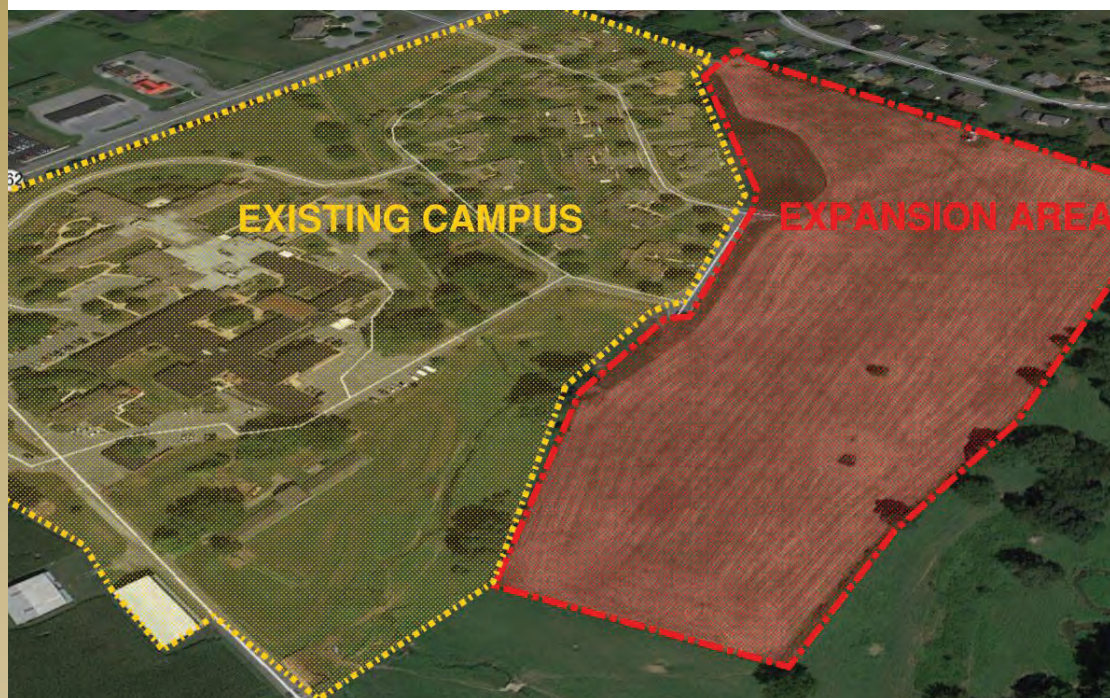
Director of Environmental Services

Bobbi Jo Casseday

Director of Development & Marketing

Mary Jo Diffendall

WE'RE

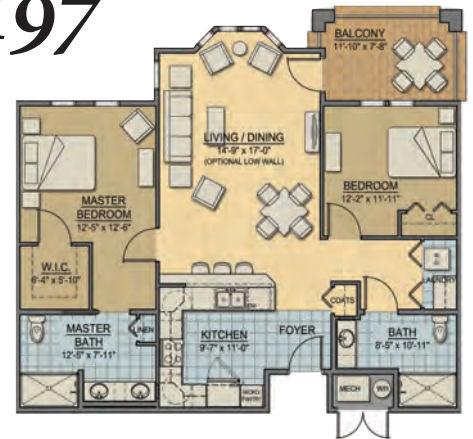


COTTAGE C



EXPANDING!

Call us at 717-285-6197



COTTAGE A



COTTAGE B



DID YOU SEE OUR COMMERCIALS?



St. Anne's was advertised on ABC, Comcast Cable, WGAL, and WITF. Here are some photos to show what you missed if you didn't see any of the commercial spots.



(The “elephant in the room” is a common idiom that refers to a certain important topic that no one wants to confront. The longer the issue is avoided, the “larger” the elephant becomes.)

Finally... a “breakthrough moment.” Why not personify the “elephant in the room?” Thus, on April 21st, the newest member of St. Anne's Retirement Community was born! Annie is currently the focus of St. Anne's campaign to remind folks that discussion of retirement living in a community can be very timely and beneficial, and never need become the elephant—or Annie—in the room!



Place your name on our waiting list. There's no fee & no pressure!

Consider an IRA Charitable Rollover Gift to St. Anne's

In December 2015, Congress passed a tax bill which made IRA charitable rollovers a permanent, non-expiring option for those 70 1/2 years of age and older. The incentive allows individuals to make up to \$100,000 a year in gifts to charity directly from an IRA, and counts those donations towards the total required distributions a person must take from a Traditional IRA each year. The funds withdrawn for donation are not taxed as income, which can benefit individuals who want to support a non-profit or those who may not need all the money in their IRAs. Contact an accountant or financial advisor to learn more about IRA charitable rollovers and their tax advantages for seniors.



The money that you squirreled away may be peanuts to you, but to St. Anne's Retirement Community, it's a golden nugget!

WITH DONATIONS OF **TIME, EFFORT** AND **MONEY**, WE WILL CONTINUE TO MAKE LIVES BLOSSOM.

OUR **BENEVOLENT FUND** ALLOWS US TO FULFILL THE **NEEDS OF RESIDENTS** WHO FIND THEMSELVES UNABLE TO MEET THE **TOTAL COST** OF THEIR CARE.

A GIFT OF \$1,000 WOULD BE GREATLY APPRECIATED.



NEWS BRIEFS



A red maple tree was planted on the grounds of St. Annes to recognize Earth Day on April 22.



what's been hap



Residents June Oberholtzer and Leon Hutton were crowned King & Queen of Hearts on Valentines Day.



The **Strawberry Festival** was held on the beautiful grounds of St. Anne's on Thursday, June 8. The evening was *berry* nice!



Staff from St. Anne's volunteered at the *Antique Road Show* that was taped at WITF, Harrisburg in June. It will air next year.

Flower arrangements were prepared at the Caring for Caregivers Day held at St. Anne's on Saturday, April 22.



St. Anne's staff participated in the fundraiser for Schreiber Pediatrics.

Opening around St. Anne's...

4-1-1

On May 13th, four events were held at St. Anne's

- Chicken BBQ
- Bake Sale
- Vendor Show
- Job Fair

To benefit St. Anne's Residents.



St. Anne's staff helped to pack brown bag lunches for St. Anne's Church in Lancaster to distribute to the homeless.



A VIP priority dinner for the Expansion was held in Pauline Hall in May. Fourteen deposits on the new apartments were made at this event.



COMING UP

don't miss these events



OPEN HOUSE
Saturday, October 21,
10 am-4 pm.
Tour our new Villa.



**WE CAN'T DO IT WITHOUT
YOU-WE NEED VOLUNTEERS!!!**
Call Ken @ 717-285-6121
for more information.

What's been happening around St. Anne's...



On Friday, June 30, St. Anne's held its sixth annual **Mitre Cup Golf Tournament** at the Hershey Country Club, West Course. Team Lancaster and Team Harrisburg enjoyed a great day of golf. Both teams played extremely well and ended up in a tie. Who will break the tie next year? Stay tuned!



HEART to HEART

BE PART OF

THE EXTRA ORDINARY GIVE™

Friday, November 17th

This is a great way to support St. Anne's Retirement Community.
Please consider making a gift to us.

CHRISTMAS BAZAAR

Friday, November 17
and
Saturday, November 18

#GivingTuesday
November 28th

National Day of Giving
www.NationalDayCalendar.com

Tuesday after
Thanksgiving



Sr. Bernice in jail during last years Extra Ordinary Give. Sister raised over \$300 for us.



BLOCK PARTY

is Thursday,
August 17
at 6:00 pm.
Join us!



READING FIGHTIN PHILS vs. AKRON RUBBERDUCKS

St. Anne's Retirement Community will be featured during "Senior Day" at the Reading Fightin Phils, Monday, August 7. Game time is 9:35 am. We will have a marketing table set up with information.

We have **1,000 free tickets** for the game. If you would like to attend, please call 717-285-6539 to reserve your tickets. Join us at the ballpark!





1956

The
**DOORS OF
ST. ANNE'S**
is a special permanent display

in the hallway by
Carmela's Garden.
The murals, painted
by Bob Brinser,
chronicle the



2000



1930

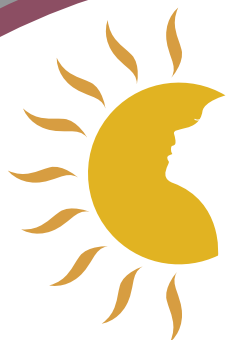
growth of St. Anne's
through the unique
depiction of our
different entrances
over the decades.



1971

Thank you to our Business Partners for supporting St. Anne's Retirement Community throughout the year!

Platinum Sponsors



DERMATOLOGY PHYSICIANS
*Laser & Skin
Care Center*

Diamond Sponsors



Gold Sponsors



Silver Sponsors

Andrew T. Scheid Funeral Home
Clyde W. Kraft Funeral Home, Inc.
The Cope Salt Company
Cura Hospitality
D.H. Funk & Sons, LLC
Lancaster Catholic High School
Medication Information Services
Williams Apothecary, Inc.

Bronze Sponsors

Aetna US Health
BB&T
CILS, Inc.
Diocese of Harrisburg
ELA Group
Knights of Columbus Council
#867, New Danville
Lezzer Lumber
Lehigh Valley Respiratory Care
Martin's Flooring

Murray Securus
Nikolaus & Hohenadel, LLP
Noelker & Hull Associates, Inc.
Padden, Guerrini & Assoc., P.C.
Paragon Alliance Group, LLC
Paul Davis
RECOVER. RECONSTRUCT. RESTORE.
Physicians Mobile X-Ray Inc.
Quality Digital Office Solutions
TCW Computer Systems/Glick
Audio & Video
The Medicine Shoppe Pharmacy
Weaver Associates, Inc.

Church Sponsors

St. Leo the Great Church
St. Philip the Apostle Church
St. Joseph Church

Interested in becoming a Business Partner? Please call 717-285-6112 for details.

HEART *to* HEART

St. Anne's Retirement Community

3952 Columbia Avenue
West Hempfield Twp., PA 17512-9715

Sponsored by the Adorers of the Blood of Christ

Solicitation Policy

If you wish to have your name removed from the mailing list to receive newsletters or fund-raising materials supporting St. Anne's Retirement Community, or if you're receiving duplicate copies, please send a written request to:



Marketing Department
3952 Columbia Avenue
West Hempfield Twp., PA 17512-9715

or



mdiffendall@stannesrc.org



www.StAnnesRC.org



facebook.com/St-Annes-Retirement-Community

Non-Profit Org.
U.S. Postage
PAID
Lancaster, PA
Permit No. 1784

Only Two Issues of Heart TO Heart
will be printed per year.

We are trying to be good stewards of our environment!

Please visit our NEW
website, StAnnesRC.org, for current
monthly calendars, upcoming events
and our wish list!



2017

HARVEST FEST

October 7

Join us!

Doors open at 6:00 p.m.

This will be an evening of Heavy
Hors d'oeuvres, Desserts, Open Bar,
Live Music, Live Auction, Silent Auction,
Chinese Auction and \$10,000
Draw Down Event. *(Only 200 tickets sold)*

All proceeds benefit the Residents of St. Anne's

Admission Tickets are \$60
Draw Down Tickets are \$125

Call 717-285-6539
for more information