

ARTIST CONTINUED ...

our new arts instructor, Paula Roman-Leon. Paula will be leading a special art project or craft on the first Thursday of each month, at the Creativity Workshop.

Paula has been a Painter, Illustrator and Graphic Designer for over 20 years, working with many companies in the DC area. Born in Attleboro, Massachusetts, Paula attended the Portland School of Art, in Portland, Maine. There she studied fine arts as well as Graphic Design and minored in Illustration.

Today, Paula still paints, but also teaches painting and drawing to children and adults.



Betty Long with the jewelry box she created.



Viewing the Crafts

THULE, GREENLAND

BY RON HOLSOPPLE

I deplaned at Thule Air Force Base in Thule, Greenland on December 16, 1956. The temperature was -25 degrees, the next day it got cold.

Thule is located on the northwest coast of Greenland about 950 miles from the North Pole. There was no civilization between the air force base and the North Pole, though there was a small Danish weather station nearby, and I saw one group of Eskimos pass through.



The air force base itself was built during the Cold War to refuel in flight bombers, flying from the US to Russia over the North Pole. In Thule I was assigned to a 90mm cannon anti-aircraft battalion that protected the base from enemy aircraft. My battery was located about five miles north of the base and about three miles west of the Greenland Ice Cap.

Halfway there was the world's tallest man-made structure, an antenna that rested on three ceramic balls. It's height has since been eclipsed by other structures. We could observe at the base of the ice cap a

secret construction project. Engineers were building a nuclear power plant which has since been declassified.

In December, January and February the average temperature was -27 degrees, during June, July and August it went up to 47 degrees. I did not see the sun until two months after arriving; then it was above the horizon only a few minutes. After two months of increasing light it stayed above the horizon for two months-the light season. The light season very disconcerting; some painted over their windows to have darkness for sleeping.

Repairs and deferred maintenance were accelerated during this time and ocean ships could only arrive in the harbor for these six weeks of the year. Most cargo was handled by manual labor, working on a rotating basis. The sun then took two months to completely set, where it remained for two months.

Our buildings were on supports about two feet off the ground, had they been on the ground they would melt the permafrost underneath them, causing the buildings to sink. There was a rope strung between buildings and places of duty in case of a whiteout, one could navigate the site by following ropes. There were emergency rations and water stored in the barracks and several key points that would not freeze.

We depended on the base for logistical and utility support, which with winter storms sometimes became dicey. The base provided electricity via an underground cable; everything else had to be trucked in. Water was hauled in by tanker truck and pumped into our building's tanks. During severe storms the trucks could not deliver, which happened twice in my time there, an emergency run had to be made-hauling water in five gallon cans.

The dining facility served four meals a day. There was a movie two or three times a week in the dining hall, using a 35 mm projector, with reels having to be changed several times during the movie.



Bomber Refueling in Thule

On December 16, 1957, after spending one year, four hours and a few minutes, I left Thule for reassignment in Texas. It was a welcome cultural and weather adjustment.

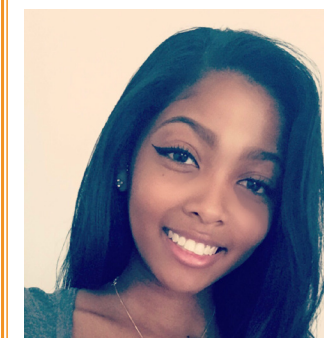
Written by Ron Holsopple

WELCOME!



Regina Lanctot

Regina will be working closely with the Front Desk and Activities Department.



Desiree Jones

Desiree will be working with residents in group fitness classes and in the pool.

SEPTEMBER 11TH HONOR CEREMONY

Just as it was 16 years ago, the day was bright, with a cool breeze and clear sky. Ron Holsopple hosted our honor ceremony for 9/11 at the Flag Pole at 9:30 a.m., with a moment of silence at 9:37 a.m., which was when the Pentagon was attacked from the air. Ron said a few words in reflection before the ceremony began, and was joined by others to lower the flag. Afterward, Ron's message sent us about our day with hope and in gratitude that we live in America.

Our two trumpeters played a haunting, solemn rendition of Taps. Mark Davis was sent to us by Glenn Dewey, Bassist, of "The President's Own"

US Marine Band/Chamber Orchestra. Terry Bradley, first chair trumpet, City of Fairfax Band, echoed Mark perfectly. Sue Mouser began to sing "America the Beautiful," and soon was joined by everyone.



MONDAY & WEDNESDAY:

7:30 - 9:30 AM - Open Swim
11:00 - 12:00 PM - Fall Prevention & Balance Class
2:30 - 3:30 PM - Aquatic Fitness Class

TUESDAY & THURSDAY:

7:30 - 10:00 AM - Open Swim
10:00 - 11:00 AM - Parkinsons Aquatic Class
11:00 - 12:00 PM - Open Swim
12:30 - 1:30 PM - Open Swim
1:30 - 2:30 PM - Aquatic Fitness Class

FRIDAY:

7:30 - 8:30 AM - Open Swim
8:30 - 9:30 AM - Aquatic Fitness Class
9:30 - 11:00 AM - Open Swim
11:00 - 12:00 PM - Fall Prevention & Balance Class

The Woodlands Retirement Community
4320 Forest Hill Drive, Fairfax, Virginia 22030
(703) 667-9801 - TheWoodlandsCCRC.com
marketing@thewoodlandscrc.com



OCTOBER 2017



THE WOODLANDS WAY

Artist Workshop Showcase

Woodlands residents in the Thursday Artists Workshop presented a colorful and diverse show of work in the Creativity Craft Show on September 14th in the Community Room.

The event showcased arts and crafts of thirteen artists, and included over twenty different craft projects such as Treasure Boxes, Note Cards, Pictures and Drawings, Flower Pots, Holiday Ornaments, Knitting/Crocheting, Pumpkins, Solar Light Beach Jars, Bird Houses and Picture Frames.

The latest craft, pumpkins decorated in elegant fabrics on September 7th, was led by



A Sample of Crafts by Betty Marshall