



Eye on Evergreen

Conversations with your friends and neighbors

Vol. 3 No. 3

August 2018

The New and Ever Changing Evergreen

Is Evergreen *really* a retirement Community?

Think about it. You meet a friend in a classy upgrade lobby, take a few steps to a friendly new pub and order whatever your heart desires. You have a bit of fun conversation and tasty snacks and then move into Gardenside Dining Room where you have your choice of many entrees, salads and excellent desserts. And it's not over yet. Walk down the hall through a gallery of original art and open the door to the Courtyard Gardens. Stroll around the fountain and flower beds and if you're up for it have a glass of wine at one of the bistro tables in the Courtyard. You might want to plan a boat trip with a friend.

Does this sound like a Retirement community?

Are you sure it isn't a resort?



Welcome!



The Ribbon Cutting Ceremony

The Ribbon cutting ceremony on June 7, 2018 was a welcome event, celebrating the completion of a three year construction project.

Dede Dewitt, Evergreen's Board of Director Chair, did the honor of cutting the ribbon. Joining her were CEO Ken Arneson and other board members. Also present were staff, residents, and other friends of Evergreen.

The new covered entrance, automatic doors, and a spacious lobby are most welcoming. You will also find the new Thomas E. Netta Library, Fireside Lounge, updated Guest and Resident Services, Rec Room, and Pub 67. Our Worship and Performing Arts Center is a special place and beautiful to see and enjoy.

We are all glad to celebrate the end of construction and enjoy the results!

-Ginna N.



Moving

There! I've packed my life in boxes.
The lot must weigh a ton.
I'd like to leave it all behind,
Embrace simplicity like a nun.
But, I am a fool for beauty,
Books, art, rare china, antiques,
So many lovely things
And the joy that owning them brings
We never get enough of things we don't need,
A wise man once said ,
Knowing that hearses don't pull trailers ,
I'll pass the care and enjoyment to others instead.

Bev Wintheiser



Hats Off Residents!

For nearly two years all the residents who live in the Manor building have been in the middle of the great reconstruction and construction . They have tolerated noise, confusion, and a lot of inconvenience. Their patience and acceptance of Evergreen's expansion and change is remarkable! Our hats are off to all of them!



Eye On Evergreen Contributors

June Chionchio, Manor North Resident

Ginna Nelson, Manor South Resident

Bev Wintheiser, Courtyard Resident

Marv Robertson, Photographer

Manor North Resident

Marilyn Voeltner, Village Resident

Kristine Howard, Edie Norenberg &

Linda Greene, Staff Liaisons

A New Home

"Time Flies!" How often we hear these words. There is nothing we can do to stop the passage of time, but we can, however, prepare for the future and the changes time brings. Congratulations! You've decided it's time for a major life change. No more of the "rat race" and "daily grind". **Welcome to the Golden Years here at Evergreen!** New adventures, and a more leisurely lifestyle with choices and possibilities.

My husband Ron and I were beginning to realize that we could no longer maintain our property due to our health and physical aging, so we decided it was time to start investigating our options. We knew we did not want an old fashioned nursing home setting.

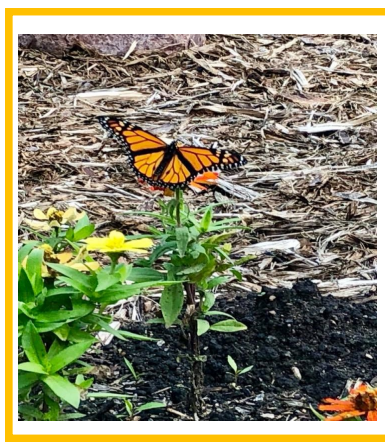
We were looking for a community with new challenges, friendships, and activities. Just as the Evergreen motto says, "Possibilities Await." Evergreen provides those possibilities by offering a variety of activities and engagements no matter where you are on the health continuum. An important factor in our consideration was the continuum of care. As we age, we know that as we move along our life's journey, the care we will need will be provided right here at Evergreen. It's true Time really does fly, Ron and I are so glad we chose Evergreen!

Marilyn V.



Ron and Marilyn Voeltner

Saving the Monarchs



Gail and Bob Bullard originally from Texas came to their Courtyard apartment earlier this year. For many years they have volunteered to work with nature and people bringing them together with enjoyment and understanding. Children have always been very special to them and over the years they have introduced hundreds of them to discover the joys of nature's animals and plants.

They have had a great concern about the future of Monarch butterflies, and have worked to monitor them and become involved in methods to ensure the continuation of their species. At Evergreen we live in their migration belt and so we have even more reason to assure an environment that will help them to survive for their long migration journey to Mexico. The Monarchs are not an endangered species so far, but they are threatened and need all the help we can give them.

Gail was pleased to discover how Evergreen has joined those who are doing what they can to help. When she discovered that Chris Bellin, Grounds Supervisor and his crew had made sure a good crop of milkweed plants was maintained on Evergreen's campus, she said "I'm very grateful to the grounds crew and administration who are so concerned with conservation and the environment."

This was of great interest to her because milkweed leaves are the only food that Monarchs can eat. A tiny egg is planted on a leaf and stays attached there for about 3 to 5 days until it hatches. A butterfly can lay from 300 to 500 eggs. It takes around 3 to 4 weeks for an egg to pass through its stages of growth and emerge to stretch its beautiful wings and fly away.

This year, Gail has nurtured 20 of these beauties that have become adults and flown away, and many more who are going through the stages it takes to join them. In her apartment she has all the things needed to bring the eggs to life. They have a net house that she keeps supplied with milkweed leaves, the right temperature and lots of attention. It is a fascinating procedure, another of nature's wonders. When the time comes, Gail makes sure their wings are dry and stretched and all is well. Then she takes them out on her balcony and sends them on their way.

This is a beautiful story of someone who believes in the conservation of our planet and the things in it. And she does something about it. Thank you, Gail.

-June C.



Residents Council Grows

Some people don't realize how important Residents Council is to all of us who live at Evergreen. On the second Monday of every month there is a meeting in the Behnke Center at 9:30 a.m.. All residents are encouraged to come. After a welcome from President Sandra Challoner a prayer and business reports, the chairman of each committee reports what's going on in his or her department and answers any questions. The Council has been a growing organization as more and more residents attend and want to know what's happening where they live. All the people at every level of office are residents. Evergreen President and C.E.O., Ken Arneson is invited to join us at the end of the meeting. He updates us about the past month and answers any and all questions.

In June of this year a new slate of committee chairmen went into effect. Some of these people have served for more than one term. Each committee now has more news to report and more work to do. Many thanks to all the committee members and especially the chairmen, both past and present, as they have accomplish so much and make a lot of information and opportunities available to us all. If you have a special interest or ability, one of our committees might be something you would enjoy and the Council would benefit from your help.

Those who come to the meetings will tell you that there is a lot of information exchanged and a lot of questions answered. It's always a casual meeting where everyone feels free to speak up and get some honest responses. It's a valid way to have a good exchange and let Evergreen know how their residents feel about their life here. Below is a list of the present Chairmen of all the committees. They can tell you more about their activities.

Committee Chairmen June 2018

Art – Ginna Nelson (MS)	235-2499
Grounds – Barbara Bowlus (V)	385-7736
Employee Appreciation – Gene Winkler (MS)	235-7585
Health & Wellness – Sandra Challoner (V)	233-0647
Library – Lois Hedge (CY)	303-5899
Manor Mart – Luella Remmel (V)	235-1197
Spiritual Life – Karla Zimmerman (H)	210-8629
Nominating Committee (5) – Luella Remmel (V)	235-1197



Wii Bowling Teams 2018



The Art Committee hard at work



Ricksha Rides



Food & Follie to Ground Round



2018 Wii Bowling Team



Lemonette's PJ party in the FireSide Lounge



Pontoon Rides down Sawyer Creek



Lemonette's get together



Dedication of the WPAC



Thank you to Caitlyn Scott...

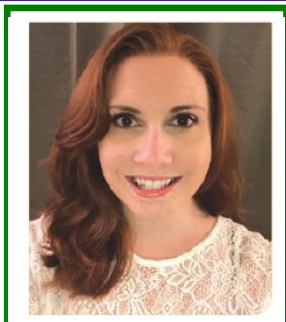
Caitlyn is a Life Enrichment Specialist and has written the following articles to bring you more information about our new facilities.

NEW LIBRARY !

The new library is appropriately named after **Thomas E. Netta** (3/19/41 to 9/13/12). Tom resided in Oshkosh and became familiar with Evergreen when his Aunt Amelia Neumueller lived here in 2001. Tom's love for books and his family connection to Evergreen led to his donation of 2,200 books and \$639,498 to the construction of our library.

Over the last year the Library Committee has diligently worked sorting and categorizing large donations of books for Evergreen Residents to enjoy. We continue to have a large selection of books from the Oshkosh Public Library that will be rotated every month. You can find an extension of the Oshkosh Public Library books in the Creekview North Library (located across from the Beauty Shop). Added to our library is a selection of newspapers and magazines. ****Please leave current magazines in the Library.*** A computer is now available in the library with access to the internet and online editions of the newspapers.

A new process is being implemented for our Library. We are now asking people to sign out books in the black binder that is on the counter. There are two drop boxes, one marked Evergreen books, and one marked Oshkosh Public Library books. When returning a book, please place it in the correct drop box. Don't forget if you don't find what you're looking for, the Oshkosh Public Library offers home delivery service.
(920) 236-5203



Caitlyn Scott
Life Enrichment
Specialist
237-2174

NEW REC ROOM!

Table Top Shuffle Board is a great game for two people or four! The object of the game is to score by having your colored weight farthest on the board, without going over the edge. Individuals play to 15, teams play until they reach 21. HINT: lightly push the weights, not much force is needed.

You are able to play different games on the electric dart board. The most common game is 301, where each dart score is subtracted from the starting point. The first player to get down to exactly zero wins. This board is also capable of playing Simple Cricket and Scram Cricket. The best part is that the board scores everything for you!

The object of Skee Ball is to roll the ball up the ramp and into one of the circles. Each circle has an assigned value from 10 to 100. The higher your score, the better! Notice that I said roll the ball, **please do not throw it** as damage or injury may occur.

The Classic-cade Arcade game houses 60 different games! These include Pacman, Donkey Kong, 1943, Pinball Action and Gun Smoke!

The two TVs will be used for Brain Games, and Wii!, which is a virtual gaming system. (Example: Wii! Bowling, Golf, Tennis and other games) Anyone can play on the Wiis. The controllers are kept in the drawers under each TV. Other board and card games available as well. There is a weekly schedule for the Rec Room, and can be reserved. If you would like to play Bridge, have a Poker Night, or start a Dart League, you can! Contact Caitlyn Scott and she will reserve the room for you.

NEW! REC ROOM!



Air hockey Table

Skee Ball



Rec Room

Arcade Game housing
over 60 different
classic games.



NEW! FRONT OFFICE!

Evergreen is committed to providing quality transportation services that are safe and convenient for all of our residents. In efforts to provide the best possible service, there are a few things that residents should know when it comes to scheduling transportation:

Residents in all living options at Evergreen utilize our transportation services so availability can be limited at times. Appointments are offered on a first call, first serve basis, so we encourage you to schedule your ride **as soon as possible**.

Last minute rides for personal errands are typically easier to schedule than last minute rides for medical appointments, as pickup time is generally more flexible. We do try our best to accommodate all rides, *but this may not always be the case depending on the day's schedule and staffing.*

To schedule a ride, residents in Independent Living options should call **Resident and Guest Services at (920) 233-2340** during normal business hours.

It's important that you are ready with the name and address of your destination, as well as date and time you'd like to have a ride. Please indicate whether or not you need a wheelchair or would like to take a scooter with you.

Normal hours of Transportation are Monday through Friday, 7:30 a.m. to 8:00 p.m., and Saturdays and Sundays from 7:30 a.m. to 5:00 p.m. Trips outside of normal operating hours can be arranged with advance notice, however, there is an additional charge for these rides.

Our drivers offer door-to-door service and are happy to help residents get into and out of vehicles if needed. All of our vehicles have wheelchair lifts for easy entry and exit, and we even have one vehicle that is low to the ground, making it easier for residents without wheelchairs to access.

We strive to provide the best service possible and are always open to suggestions for improvements. Please contact Brooke Knoll at (920) 237-2101 with questions or concerns.

NEW FIRESIDE LOUNGE!

The Fireside Lounge has been a wonderful surprise to everyone at Evergreen. We are just so excited to see all the possibilities unfold. A variety of new events like: Oshkosh Poetry group's monthly meetings, Cookies & Company, Soup & Games and Saturday Social with Sherri (formally known as Minding the Manors), Veranda Nights, and special receptions. The Fireside's central location is great for these gatherings and it has access to our outdoor Veranda! If you are unable to go outside, the windows surrounding the lounge allows us to enjoy the sights while staying in the comfort of the building. Tables and chairs are available which can be used to create the environment needed for different events. This is still all unfolding, and we can't wait to see where it goes from here!

NEW FIRE TABLE

Have you missed the cozy warmth of gathering around a camp fire? The Veranda outside of the Fireside Lounge has a fire table. It has hosted several activities like Cookies and Company, Veranda Nights and as the weather cools and sweaters come out, we look forward to cozying up to it's warmth.



NEW! PUB 67!

April Beese and Marlene Olson are the girls behind the bar at Pub 67. They are friendly, helpful, knowledgeable, and fun to visit with.

The pub is now open from noon to 8:00 p.m. daily. A full menu is available including appetizers, soups, 2 sandwiches, 2 burgers, pizza, chicken tenders and wings. The menu will have daily specials which will rotate weekly.

There are plans for a ladies night and a Sunday family night. Non-alcoholic drinks are available as well.

The pub is a place to meet with old friends and make new ones. ***Come and enjoy!***

Ginna N.



Evergreen invited us all to **"An Afternoon of International Food Tasting"** on July 18 in the Fireside Lounge. This was a first, so we weren't sure what to expect. It was a smashing afternoon! The food and drinks of eight countries were narrowed down to the country's specialties. This event designed by Life Enrichment specialist Ellen Peter and Sherri Landing. The kitchen and the Pub reproduced them in a most delicious way. Everything was outstanding and the presentation was beautiful. The food and drinks were enjoyed by us all, and we hope it will happen again. Nobody wanted to go home!

Thank you!



Outdoor Spaces!

All Aboard!! The pontoon boat will go cruising down the creek every Monday from 1:30 to 3:00 p.m. Join the jolly crew and see a landscape only a waterway can give you. Reserve your seat at the main desk.

Take a stroll around the Courtyard gardens. Stop! Savor the floral carpet along the walkway, from tulips and daffodils in spring, to gay zinnias and shy pinks in summer, interspersed with thriving young trees. Relax with the soothing sound of water cascading from the waterfall in the center. It can be a Zen moment.

Doesn't matter if you're right or left handed, get into the swing of things with a game of Bocce Ball hosted by Lyndsey and friends. Every Thursday at 4:15 p.m.. They meet on the court across the street from the main entrance of Creekview on Eagle Street.



Fire Places!

Have you missed the cozy warmth of the fireplace you once had? Evergreen has three to take the chill off the coming seasons ahead. One shares space with the library on the main floor a few steps south of the front desk. Pick a book from the library shelves large selection, settle near the fireplace and enjoy the cocoon you've created for yourself.

The second is located in Creek view south it is the lounge between our rehab and households 7 & 8 in the Creekview Neighborhood Place a welcome spot to share while visiting with someone in re-hab. The third is in the entrance lobby of the new Courtyard, the Hearth Room. It has the bonus of having a large screen TV above it, a great spot to catch a Packer game with friends. Wow, who's bringing snacks?

-Bev W.



Check out these two new zen garden boxes that were installed in our Oak Savanna! Thank you to Alexander Peters for creating these for us as part of his Eagle Scout project!

New! Evergreen Art Collection!

When the new reconstruction was planned for the Manor building at the time the Courtyard Apartments were being built, it was also the right time to replace and purchase some exciting new art work for our buildings.

Ellen Peters, Evergreen's Life Enrichment member, teaches her four art classes here each week, and has also been the leader and advisor to the Art Committee. Her assignment with the committee was to find suitable fine art work that would be beautiful on Evergreen's many walls, old and new. Area artists were encouraged to come and show their work. The committee also went to various shows and exhibits. Fine prints were purchased when the original was too pricey for the budget. This large assignment was accomplished very close to the Open House date. Ellen, with the help of Mark Burleton in Maintenance, hung each picture in its place after Ellen and the committee made decisions regarding the right paintings and groupings. Some of the paintings were gifts or loans from residents. This project involved hundreds of paintings. The result has been an amazing display of art that fills the eye wherever you go.

The Art Committee includes Chairman: Ginna Nelson, members Joan Cason, Betsy Comstock and June Chionchio. The committee continues to work with Ellen on this big project.

A future job for the Committee is to identify each painting in our buildings by title and artist.

June C. and Ginna N.





The Worship & Performing Arts Center is a very beautiful addition to the Evergreen property. It is not only a huge improvement to the services and programming that it allows, but it lets the space taken up in the Manor where it was once located, be put to other important uses. The old chapel was located across from the library. Its location wasn't private or appropriate for many of the gatherings and services that were planned. A devotional room has been added, located across from Pastor Steve's office. The new Worship and Performing Arts Center has brought so many advantages for worship and memorial services and programs of every kind. There has been such an entertaining variety already. It has all melded into a new convenient and enjoyable living plan.



For many years Evergreen has had a good variety of reading material for residents. There was a large area off the FireSide Lounge that had shelves of books and places to sit and read. In a few other parts of the Manor building, and in Creekview a stack of shelves held some well read volumes in their lounges. a new design and concept came to be, and now the library located in the same area is expanded into a new facility that has so much more to offer. Not just more to read, but a quiet and comfortable place to come and read the paper or choose your favorites. What a well -done expansion.



The New and Ever Changing Evergreen



The old gift shop was fun to browse in, pick up some cards and maybe something sweet. It had an always-changing variety of jewelry and accessories and little gift items. It took up a lot of room for the amount of business it did, and with the reconstruction came a brilliant idea to use the space for a Pub, a move the gift shop to a smaller more convenient quarters off the front lobby. It is very available and still sells cards, all the necessities plus nice personal products, some special food items, little gift items and more. It is open from 8:00 a.m. – 4:00 p.m..

Living in Harmony

There has been a friendly atmosphere all over Evergreen these days. The new residents and the old residents are getting to know each other and everybody seems to be having a good time. It's great to make new friends and discover things you like to do. The staff is always there when you need them and it's easy to tell that they really care about the people who live here.

June C.

Delivery of USPS mail to Evergreen Residents

Several months ago a memo was sent out with information about the mail service, but since many new residents may have not received that memo, we'd like to offer a little refresher about picking up your mail.

External mail for residents is typically delivered before 11:00 a.m. Monday through Saturday to the Resident & Guest Services desk. Outgoing mail is also picked up at this time (mail is picked up by the USPS only once per day). Once mail is received, staff sort it accordingly and place it in resident mailboxes. Our goal is to have mail available for pickup by 1:00 p.m. each day, but depending on the time in which mail is delivered and how much there is to sort, this can sometimes be delayed. We ask that you please wait until **at least 1:00 p.m.** before checking your mail, *and if staff is placing mail in boxes at the time, please wait until they are finished and refrain from asking the staff person to grab your mail for you out of the mail cart.* This is to ensure that everyone's mail is placed in the correct box. We appreciate your patience in waiting for your mail to be delivered and always try to have it ready for you as quickly as possible. Your assistance with this is a big help!

Evergreen Oak Savannah

Ever Changing Ever New

Of all the interesting activities offered at Evergreen, guess which is participated in the least? It's a peaceful walk through the Savannah along the creek.

Surely, we are treated to manicured gardens bursting with seasonal blooms in all their colorful beauty, but have you taken a walk a little on the wild side? The rewards are plentiful and it's wheelchair friendly.

John Muir, conservationist saved the National Parks so that all of us can enjoy their majestic beauty, once said: "Keep close to nature's heart and break away once in awhile, wash your spirit clean. In every walk with Nature, one receives far more than he seeks."

Whether you go there to exercise at your own pace, mediate, enjoy the fresh air, bird watch or sit in the sun on the several benches along the creek, it's grand! In spring look for migrating birds, the shy crocus just about to raise its head from sleep. Summer surprises with rare wild flowers scattered randomly under the trees. Look for the elegant White Egret that skims over the water and regally rests in the overhanging branches. Be amused at the mallards, often seen in the water with their bottoms up as they feed on plants below. Autumn delights with its kaleidoscope of gold, red and orange on every tree and the crunch of dry leaves under foot. Watch squirrels stuff their cheeks with fall hickory nuts, and monarch butterflies feeding on milk weed to sustain them on their migration to Mexico.

It's all here, Enjoy!!

